

# Band Pass Filter

## WGLB-07240-2012

50Ω 6240 to 8240 MHz

Ver. A  
2021.08.08

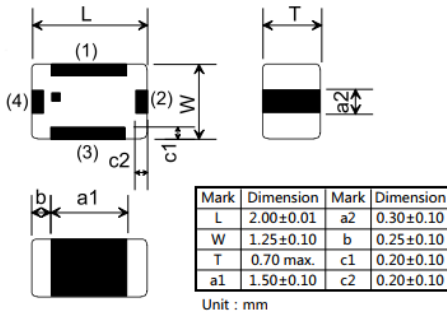
### Maximum Rating

Operating Temperature	-40°C~+85°C
Storage Temperature	-55°C~+100°C
RF Input Power	0.5W max at 25°C

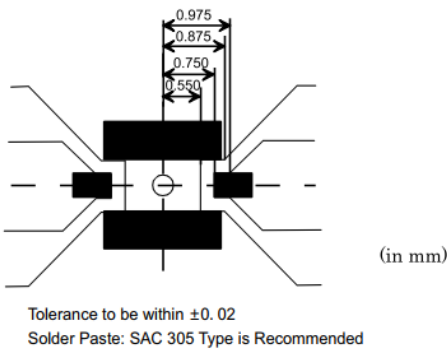
### Pin Connections

RF Input	4
RF Output	2
Ground	1,3

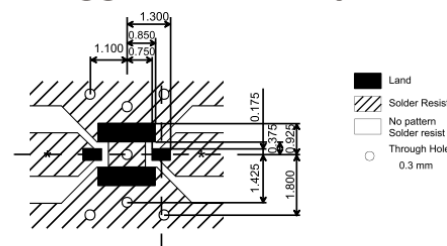
### Outline Drawing



### PCB Land Pattern



### Demo Board Suggested PCB Layout



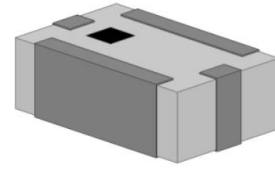
\*Line width should be designed to match 50 ohm characteristic impedance, depending on PCB material and thickness

### Features

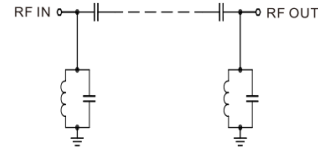
- High Performance
- Small Size
- Wide Band
- Ultra Low I.L.
- Temperature Stable
- LTCC Structure

### Application

- Harmonic Rejection
- Transmitters/Receivers
- Lab Use



RoHS Compliant



Functional Schematic

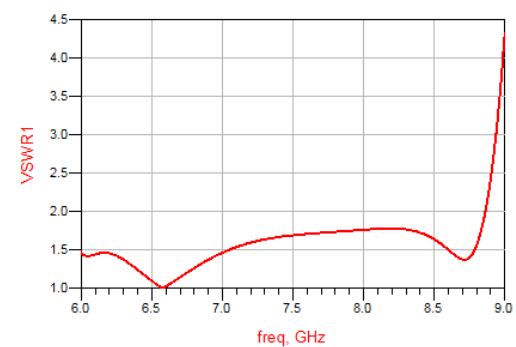
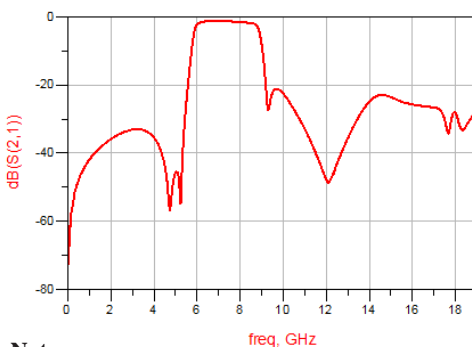
### Electrical Specifications<sup>(1)</sup> at 25°C

Parameter		Frequency (MHz)	MIN	Typ.	MAX	Unit
Pass Band	Center Frequency	-	-	7240	-	MHz
	Insertion Loss	6240-8240.	-	1.2	2.0	dB
	VSWR	6240-8240	-	1.55	2.21	:1
Stop Band	Rejection Loss	698-2200	30	32.7	-	dB
		2300-3800	30	31.6	-	dB
		5150-5470	19	23.8	-	dB
		5470-5725	3	13.4	-	dB
		12500-16500	17	20.2	-	dB
18700-20000	6	12.1	-	dB		

(1) Test on our Demo Board.

### Typical Performance at 25°C

Frequency (MHz)	Insertion Loss (dB)	VSWR (:1)
700	44.99	133.38
2000	35.91	74.03
3000	33.11	53.88
4500	43.99	30.59
5150	47.58	23.01
5470	27.09	17.087
5725	10.81	7.55
6240	1.61	1.435
7240	1.32	1.62
8240	1.74	1.78
10000	22.64	22.29
12500	42.85	29.15
16500	26.29	16.18
18700	29.90	7.44
20000	27.28	11.63



### Notes:

- The specifications are tested at 25°C±5°C, relative humidity 55~75%.
- Other quality and characteristic not specify in this datasheet. Please contact us for detail requirements.



Well Genius Technology (Shanghai) LTD.

Room 1001, Block C, Hi-Tech Building, No.900 Yi Shan Rd, Shanghai, P.R.C, 200233

Tel: (021) 6495 8888

Fax: (021) 5423 5889

www.wellgenius.com