

Band Pass Filter

WGLB-03115

50Ω 2720 to 3570 MHz

Ver. A
2022.12.13

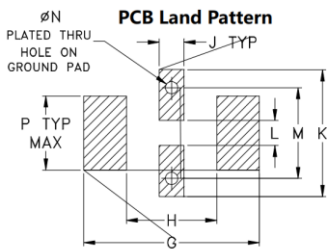
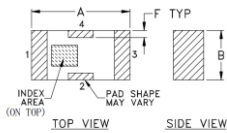
Maximum Rating

Operating Temperature	-55°C~+100°C
Storage Temperature	-55°C~+100°C
RF Input Power	1.5W max at 25°C

Pin Connections

RF Input	1
RF Output	3
Ground	2,4

Outline Drawing

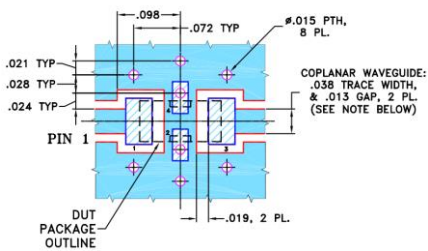


Suggested Layout
Tolerance to be within ±.002

Outline Dimensions (Tolerance) mm

A	B	C	D	E	F	G		
3.20	1.60	0.95	0.51	0.81	0.23	4.29		
±0.2	±0.2	±0.2	±0.1	±0.1	±0.1			
H	J	K	L	M	N	P	wt	
2.21	0.61	3.10	0.61	2.21	0.30	1.8	.020	

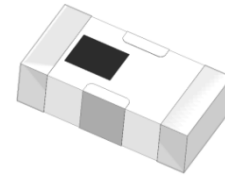
Demo Board MCL P/N: T-39 Suggested PCB Layout (PL-137)



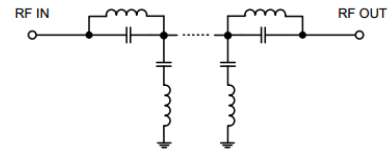
- NOTES:
1. COPLANAR WAVEGUIDE PARAMETERS ARE SHOWN FOR ROGERS RO4350B WITH THICKNESS .020" ± .0015". COPPER: 1/2 OZ. EACH SIDE. FOR OTHER MATERIALS TRACE WIDTH & GAP MAY NEED TO BE MODIFIED.
 2. BOTTOM SIDE OF THE PCB IS CONTINUOUS GROUND PLANE.
 - DENOTES PCB COPPER LAYOUT WITH SMOBC (SOLDER MASK OVER BARE COPPER)
 - DENOTES COPPER LAND PATTERN FREE OF SOLDER MASK

Features

- High Performance
- Small Size
- Wide Band
- Ultra Low I.L.
- Temperature Stable
- LTCC Structure



RoHS Compliant



Functional Schematic

Application

- Harmonic Rejection
- Transmitters/Receivers
- Lab Use

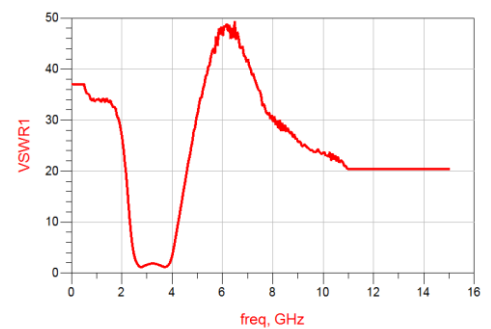
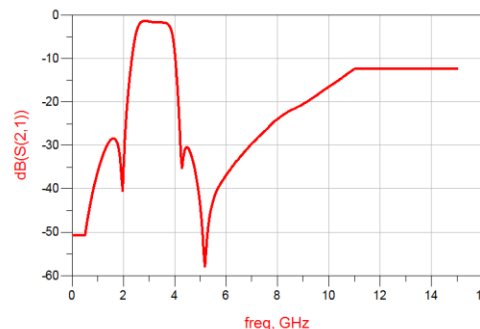
Electrical Specifications⁽¹⁾ at 25°C

Parameter		Frequency (MHz)	MIN	Typ.	MAX	Unit
Pass Band	Center Frequency	-	-	3115	-	MHz
	Insertion Loss	2720-3570	-	1.7	2.0	dB
	VSWR	2720-3570	-	2.0	3.0	:1
Stop Band	Rejection Loss	DC-1850	20	26	-	dB
		4300-8160	20	23	-	dB

(1) Test on our Demo Board.

Typical Performance at 25°C

Frequency (MHz)	Insertion Loss (dB)	VSWR (:1)
500	50.75	37.03
1000	35.95	33.99
1850	32.28	30.46
2500	3.915	3.329
2720	1.492	1.241
3115	1.577	1.784
3570	1.735	1.389
3730	2.113	1.199
4000	8.838	3.356
4300	34.33	11.58
5350	46.63	38.71
6250	34.81	48.05
6800	30.92	44.47
7200	28.42	39.01
10000	16.53	23.59



Notes:

- The specifications are tested at 25°C±5°C, relative humidity 55~75%.
- Other quality and characteristic not specify in this datasheet. Please contact us for detail requirements.