

# Low Pass Filter

WGLL-02250-2012

50Ω DC to 2250 MHz

Ver. A  
2022.03.07

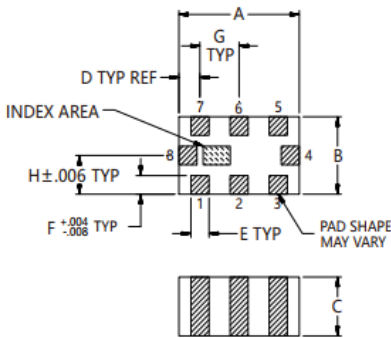
## Maximum Rating

Operating Temperature	-55°C~+125°C
Storage Temperature	-55°C~+125°C
RF Input Power	4.5W max at 25°C

## Pin Connections

RF Input	8
RF Output	4
Ground	1,2,3,5,6,7

## Outline Drawing

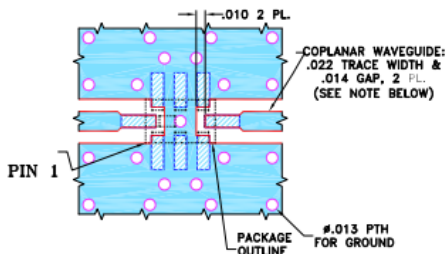


### Outline Dimensions (inch/mm)

A	B	C	D	E	F	G	Wt.
.079	.049	.037	.014	.012	.012	.026	grams
2.00	1.25	0.95	0.35	0.30	0.30	0.65	.008

Note: Please refer to case style drawing for details

## Demo Board MCL P/N: CG-2012 Suggested PCB Layout

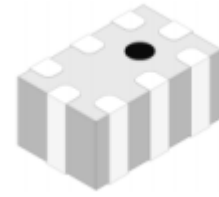


### NOTES:

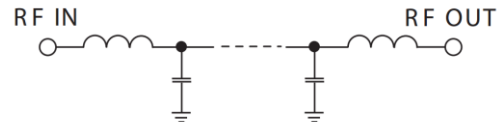
1. COPLANAR WAVEGUIDE IS SHOWN FOR ROGERS RO4350B WITH DIELECTRIC THICKNESS .010" ± .001". COPPER: 1/2 OZ. EACH SIDE. FOR OTHER MATERIALS TRACE WIDTH AND GAP MAY NEED TO BE MODIFIED.
  2. BOTTOM SIDE OF THE PCB IS CONTINUOUS GROUND PLANE.
- DENOTES PCB COPPER LAYOUT WITH SMOBC (SOLDER MASK OVER BARE COPPER).  
■ DENOTES COPPER LAND PATTERN FREE OF SOLDER MASK.

## Features

- High Performance
- Small Size
- Wide Band
- Ultra Low I.L.
- Temperature Stable
- LTCC Structure



RoHS Compliant



## Functional Schematic

## Application

- Harmonic Rejection
- Transmitters/Receivers
- Lab Use

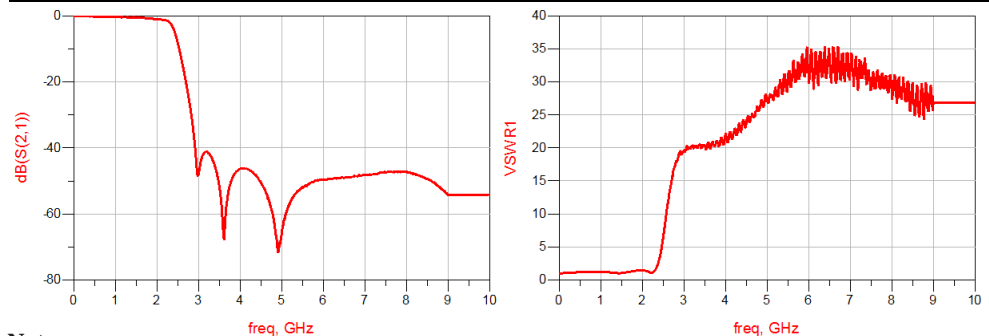
## Electrical Specifications<sup>(1)</sup> at 25°C

Parameter		Frequency (MHz)	MIN	Typ.	MAX	Unit
Pass Band	Insertion Loss	DC-2250	-	1.4	2.0	dB
	Freq. Cut-off	2360	-	3.0	-	dB
	VSWR	DC-2250	-	1.2	1.5	:1
Stop Band	Rejection Loss	2850	25	35	-	dB
		3000-6000	20	30	-	dB
		7200	20	30	-	dB

(1) Tested on Demo Board.

## Typical Performance at 25°C

Frequency (MHz)	Insertion Loss (dB)	VSWR (:1)
50	0.066	1.02
500	0.222	1.19
1000	0.393	1.24
1500	0.531	1.05
2000	1.044	1.47
2250	1.562	1.11
2575	12.64	9.79
2850	32.59	18.11
3800	49.33	20.91
4250	47.01	22.15
5000	65.55	27.46
6500	49.09	33.59
7200	47.87	30.60
8000	47.22	29.19
9000	54.12	26.88



## Notes

- The specifications are tested at 25°C±5°C, relative humidity 55~75%.
- Other quality and characteristic not specify in this datasheet. Please contact us for detail requirements.



Well Genius Technology (Shanghai) LTD.

Room 1001, Block C, Hi-Tech Building, No.900 Yi Shan Rd, Shanghai, P.R.C, 200233

Tel: (021) 6495 8888

Fax: (021) 5423 5889

www.wellgenius.com