

# Band Pass Filter

WGLB-03450-2012

50Ω 3100 to 3800 MHz

Ver. A  
2021.5.24

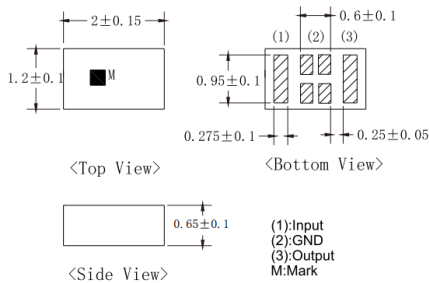
## Maximum Rating

Operating Temperature	40°C~+85°C
Storage Temperature	-55°C~+125°C
RF Input Power	2W max at 25°C

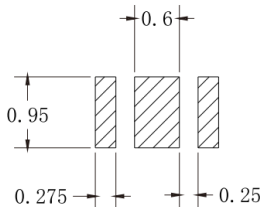
## Pin Connections

RF Input	1
RF Output	3
Ground	2

## Outline Drawing

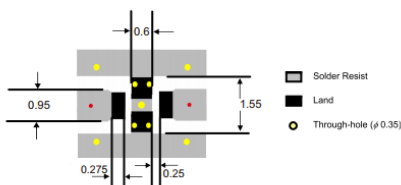


## PCB Land Pattern(mm)



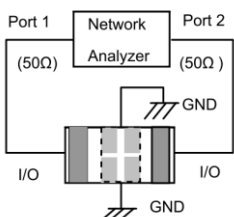
Tolerance to be within ±0.02  
Solder Paste: SAC 305 Type is Recommended

## Demo Board Suggested PCB Layout



\*Line width should be designed to match 50 ohm characteristic impedance, depending on PCB material and thickness

## Measuring Diagram

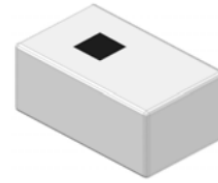


## Features

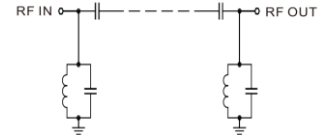
- High Performance
- Small Size
- Wide Band
- Ultra Low I.L.
- Temperature Stable
- LTCC Structure

## Application

- Harmonic Rejection
- Transmitters/Receivers
- Lab Use



RoHS Compliant



Functional Schematic

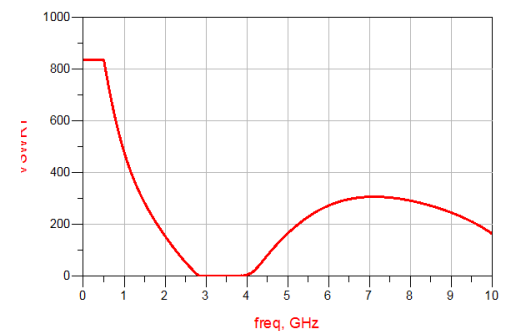
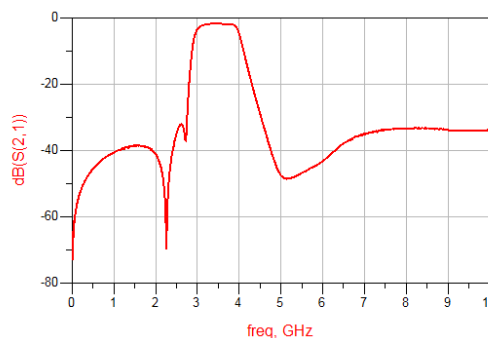
## Electrical Specifications<sup>(1)</sup> at 25°C

Parameter		Frequency (MHz)	MIN	Typ.	MAX	Unit
Pass Band	Center Frequency	-	-	3450	-	MHz
	Insertion Loss	3100-3800	-	1.7	3.0	dB
	VSWR	3100-3800	-	1.67	2.0	:1
Stop Band	Rejection Loss	500-1785	30	35	-	dB
		2660	7	20	-	dB
		4800	7	25	-	dB
		5150-10800	30	35	-	dB

(1) Test on our Demo Board.

## Typical Performance at 25°C

Frequency (MHz)	Insertion Loss (dB)	VSWR (:1)
500	42	65.6
1000	40	51.7
2170	45	51.0
2300	45.5	41.9
2700	20	12.5
3100	2.0	1.65
3500	1.4	1.23
3800	1.8	1.69
4380	20	21.89
4800	30	14.5
5150	35	8.98
6250	40	3.89
6800	35	13.04
7200	35	25.27
10000	30	34.3



## Notes:

- The specifications are tested at 25°C±5°C, relative humidity 55~75%.
- Other quality and characteristic not specify in this datasheet. Please contact us for detail requirements.



Well Genius Technology (Shanghai) LTD.