

Low Pass Filter

WGLL-06700

50Ω DC to 6700 MHz

Ver. A
2021.05.30

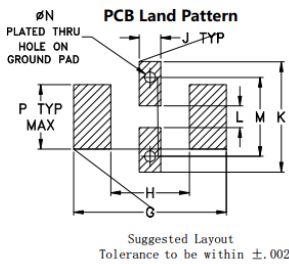
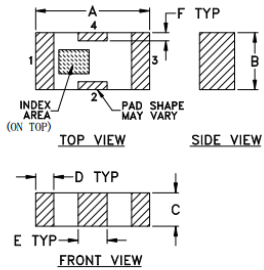
Maximum Rating

Operating Temperature	-55°C~+100°C
Storage Temperature	-55°C~+100°C
RF Input Power	10W max at 25°C

Pin Connections

RF Input	1
RF Output	3
Ground	2,4

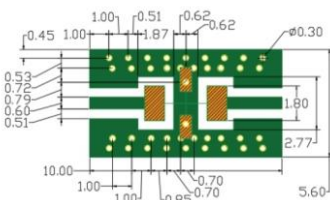
Outline Drawing



Outline Dimensions (Tolerance mm)

A	B	C	D	E	F	G
3.20	1.60	0.95	0.51	0.81	0.23	4.29
±0.2	±0.2	±0.2	±0.1	±0.1	±0.1	
H	J	K	L	M	N	P
2.21	0.61	3.10	0.61	2.21	0.30	1.8
						wt
						.020

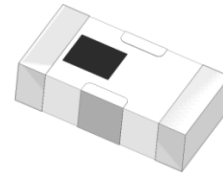
Demo Board MCL P/N: T-39 Suggested PCB Layout (PL-137)



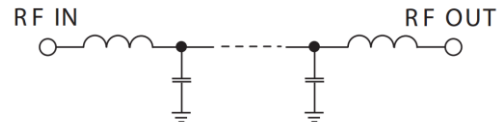
- NOTES:
1. COPLANAR WAVEGUIDE PARAMETERS ARE SHOWN FOR ROGERS RO4350 WITH THICKNESS .508" ± .0015". COPPER: 1/2 OZ. EACH SIDE. FOR OTHER MATERIALS TRACE WIDTH & GAP MAY NEED TO BE MODIFIED.
 2. BOTTOM SIDE OF THE PCB IS CONTINUOUS GROUND PLANE.
 - DENOTES PCB COPPER LAYOUT WITH SMOBC (SOLDER MASK OVER BARE COPPER)
 - DENOTES COPPER LAND PATTERN FREE OF SOLDER MASK

Features

- High Performance
- Small Size
- Wide Band
- Ultra Low I.L.
- Temperature Stable
- LTCC Structure



RoHS Compliant



Application

- Harmonic Rejection
- Transmitters/Receivers
- Base Station of Mobile Communication
- Lab Use

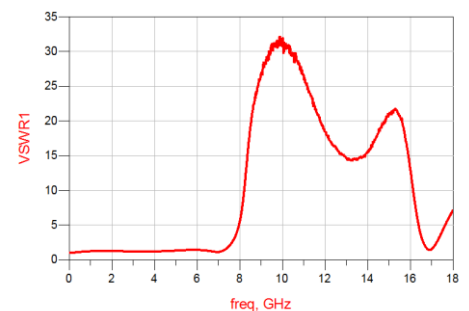
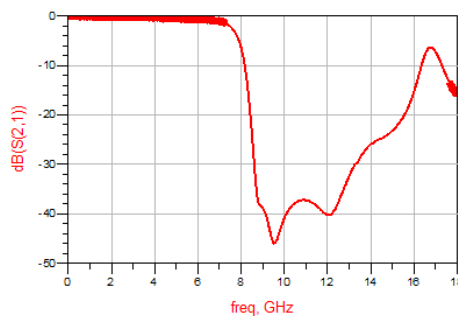
Electrical Specifications⁽¹⁾ at 25°C

Parameter	Frequency (MHz)	MIN	Typ.	MAX	Unit	
Pass Band	Insertion Loss	DC-6700	-	0.8	1.2	dB
	Freq. Cut-off	7940	-	3.0	-	dB
	VSWR	DC-6700	-	1.3	1.5	:1
Stop Band	Rejection Loss	9300	20	30	-	dB
		9500-11000	20	30	-	dB
		16000	15	20	-	dB

(1) Tested on Demo Board.

Typical Performance at 25°C

Frequency (MHz)	Insertion Loss (dB)	VSWR (:1)
500	0.09	1.11
2220	0.24	1.34
3800	0.24	1.22
5450	0.38	1.29
6700	0.65	1.24
7560	3.31	2.69
7960	12.47	4.51
8260	34.93	9.17
8540	31.06	16.71
9210	44.00	37.47
10560	31.54	56.61
13710	25.16	26.77
15360	27.43	14.38
16000	21.08	20.54
18000	11.48	24.94



Notes

- The specifications are tested at 25°C±5°C, relative humidity 55~75%.
- Other quality and characteristic not specify in this datasheet. Please contact us for detail requirements.



Well Genius Technology (Shanghai) LTD.

Room 1001, Block C, Hi-Tech Building, No.900 Yi Shan Rd, Shanghai, P.R.C, 200233

Tel: (021) 6495 8888

Fax: (021) 5423 5889

www.wellgenius.com