

Band Pass Filter

WGLB-01810-1005

50Ω

1710 to 1910 MHz

Ver. A

2021.07.08

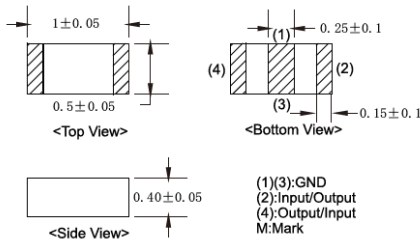
Maximum Rating

Operating Temperature	-40°C~+85°C
Storage Temperature	-55°C~+125°C
RF Input Power	0.5W max at 25°C

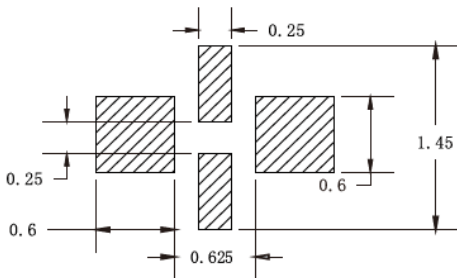
Pin Connections

RF Input	4
RF Output	2
Ground	1,3

Outline Drawing



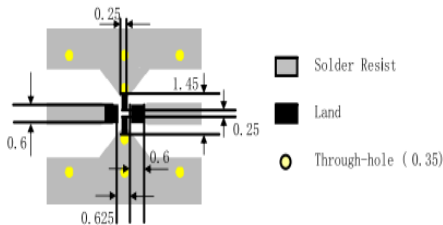
PCB Land Pattern(mm)



Tolerance to be within ±0.02

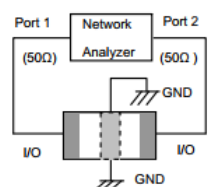
Solder Paste: SAC 305 Type is Recommended

Suggested PCB Layout



Tolerance to be within ±0.002 Line width should be designed to match 50 characteristic impedance, depending on PCB material and thickness

Measuring Diagram

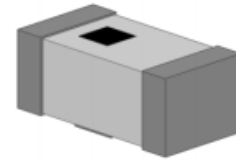


Features

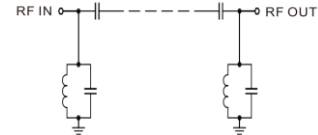
- High Performance
- Small Size
- Wide Band
- Ultra Low I.L.
- Temperature Stable
- LTCC Structure

Application

- Harmonic Rejection
- Transmitters/Receivers
- Lab Use



RoHS Compliant



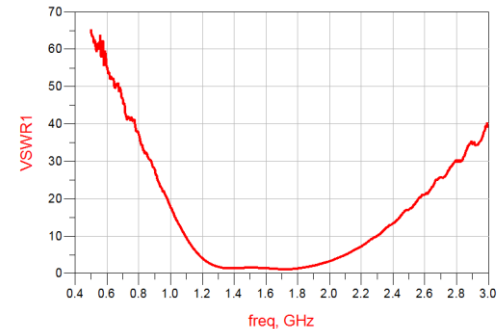
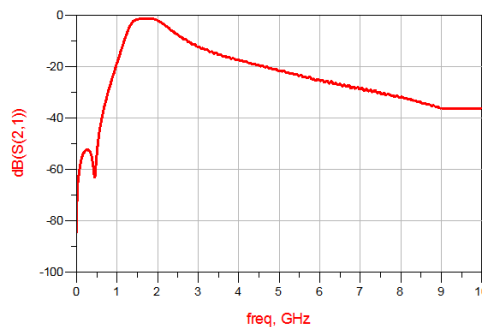
Functional Schematic

Parameter		Frequency (MHz)	MIN	Typ.	MAX	Unit
Pass Band	Center Frequency	-	-	1810	-	MHz
	Insertion Loss	1710-1910	-	1.0	2.0	dB
	VSWR	1710-1910	-	1.5	2.0	:1
Stop Band	Rejection Loss	855-955	20	30	-	dB
		2565-2865	5	15	-	dB
		7000	15	25	-	dB

(1) Test on our Demo Board.

Typical Performance at 25°C

Frequency (MHz)	Insertion Loss (dB)	VSWR (:1)
500	53.89	69.66
1000	18.41	23.24
1500	1.618	1.135
1710	1.338	1.299
1810	1.312	1.198
1910	1.54	1.542
2500	7.7	12.49
3000	12.22	33.28
3500	15.53	52.02
4000	17.4	46.12
4500	18.49	54.64
5000	21.58	48.75
6000	25.52	44.81
7000	28.68	37.62
8000	31.85	38.79



Notes:

- The specifications are tested at 25°C±5°C, relative humidity 55~75%.
- Other quality and characteristic not specify in this datasheet. Please contact us for detail requirements.



Well Genius Technology (Shanghai) LTD.

Room 1001, Block C, Hi-Tech Building, No.900 Yi Shan Rd, Shanghai, P.R.C, 200233

Tel: (021) 6495 8888

Fax: (021) 5423 5889

www.wellgenius.com