

# Band Pass Filter

## WGLB-02700

50Ω      2600 to 2800 MHz

Ver. A  
2019.6.26

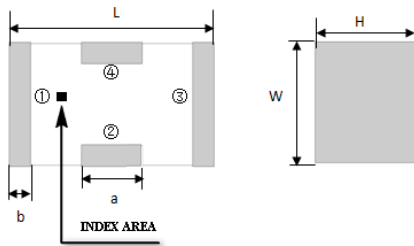
### Maximum Rating

Operating Temperature	-55°C~+100°C
Storage Temperature	-55°C~+100°C
RF Input Power	5W max at 25°C

### Pin Connections

RF Input	1
RF Output	3
Ground	2,4

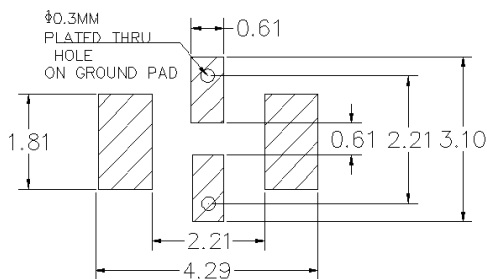
### Outline Drawing



### Outline Dimension(mm)

W	L	H
1.6±0.2	3.2±0.2	1.0±0.2
a	b	
0.8±0.1	0.5±0.1	

### PCB Land Pattern(mm)



SUGGESTED LAYOUT

TOLERANCE TO BE WITHIN ±0.05mm

### Features

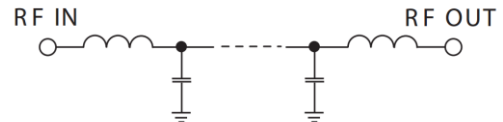
- High Performance
- Small Size
- Wide Band
- Ultra Low I.L.
- Temperature Stable
- LTCC Structure

### Application

- Harmonic Rejection
- Transmitters/Receivers
- Lab Use



RoHS Compliant



Functional Schematic

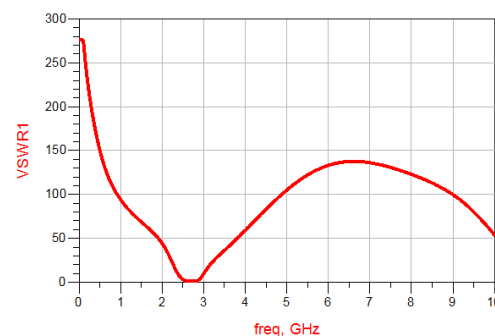
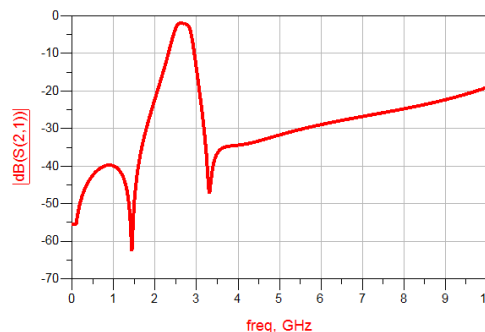
### Electrical Specifications<sup>(1)</sup> at 25°C

Parameter		Frequency (MHz)	MIN	Typ.	MAX	Unit
Pass Band	Center Frequency	-	-	2700	-	MHz
	Insertion Loss	2600-2800	-	2.5	5.0	dB
	VSWR	2600-2800	-	1.5	2.5	:1
Stop Band	Rejection Loss	DC-1400	20	30	-	dB
		DC-1500	20	30	-	dB
		4150-4200	20	30	-	dB
		4200-5600	20	25	-	dB

(1) Test on our Demo Board.

### Typical Performance at 25°C

Frequency (MHz)	Insertion Loss (dB)	VSWR (:1)
50	55.51	275.8
500	42.43	149.8
1400	54.08	72.75
1500	49.75	68.43
2300	10.87	16.43
2500	3.25	2.95
2600	1.95	1.57
2800	2.67	1.11
3000	14.29	9.63
3500	36.61	36.36
4000	34.45	59.04
4200	34.11	68.66
4500	33.32	83.04
4800	32.37	96.70
5700	29.70	127.38



### Notes:

- The specifications are tested at 25°C±5°C, relative humidity 55~75%.
- Other quality and characteristic not specify in this datasheet. Please contact us for detail requirements.



Well Genius Technology (Shanghai) LTD.