

Low Pass Filter

WGLL-00800

50Ω

DC to 800 MHz

Ver. B

2021.08.08

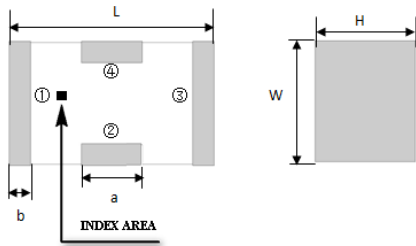
Maximum Rating

Operating Temperature	-55°C~+100°C
Storage Temperature	-55°C~+100°C
RF Input Power	9W max at 25°C

Pin Connections

RF Input	1
RF Output	3
Ground	2,4

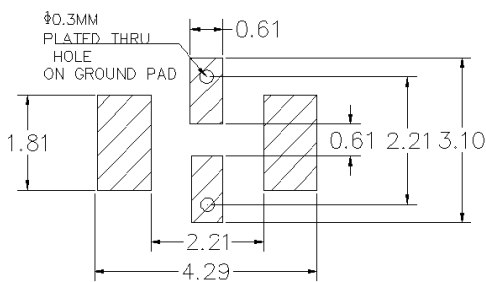
Outline Drawing



Outline Dimension(mm)

W	L	H
1.6±0.2	3.2±0.2	1.0±0.2
a	b	
0.8±0.1	0.5±0.1	

PCB Land Pattern(mm)



SUGGESTED LAYOUT

TOLERANCE TO BE WITHIN ±0.05mm

Features

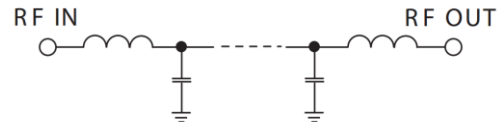
- High Performance
- Small Size
- Wide Band
- Ultra Low I.L.
- Temperature Stable
- LTCC Structure

Application

- Harmonic Rejection
- Transmitters/Receivers
- Lab Use



RoHS Compliant



Functional Schematic

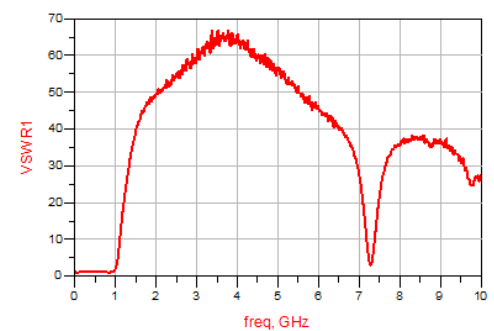
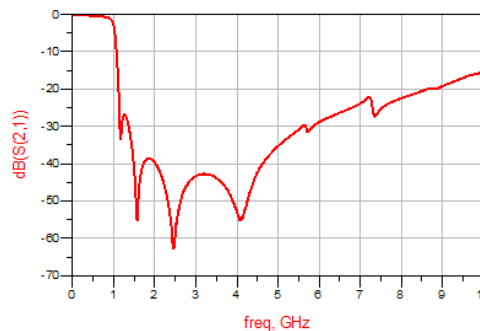
Electrical Specifications⁽¹⁾ at 25°C

Parameter		Frequency (MHz)	MIN	Typ.	MAX	Unit
Pass Band	Insertion Loss	DC-800	-	0.9	1.2	dB
	Freq. Cut-off	1000	-	3.0	-	dB
	VSWR	DC-800	-	1.2	1.5	:1
Stop Band	Rejection Loss	1400	20	30	-	dB
		1500-2000	30	35	-	dB
		4500	30	35	-	dB

(1) Test on our Demo Board.

Typical Performance at 25°C

Frequency (MHz)	Insertion Loss (dB)	VSWR (:1)
50	0.08	1.04
500	0.37	1.27
800	0.68	1.10
900	1.03	1.10
1015	3.03	2.09
1117	16.05	9.73
1180	25.87	16.47
1279	33.43	24.67
1615	58.89	42.77
1905	39.93	48.45
2457	63.31	54.64
3229	41.89	68.97
4118	78.75	70.83
6000	28.14	51.29
8000	22.32	33.71



Notes:

- The specifications are tested at 25°C±5°C, relative humidity 55~75%.
- Other quality and characteristic not specify in this datasheet. Please contact us for detail requirements.



Well Genius Technology (Shanghai) LTD.

Room 1001, Block C, Hi-Tech Building, No.900 Yi Shan Rd, Shanghai, P.R.C, 200233

Tel: (021) 6495 8888

Fax: (021) 5423 5889

www.wellgenius.com