

Band Pass Filter

WGLB-02850

50Ω 2750 to 2950 MHz

Ver. A
2021.06.01

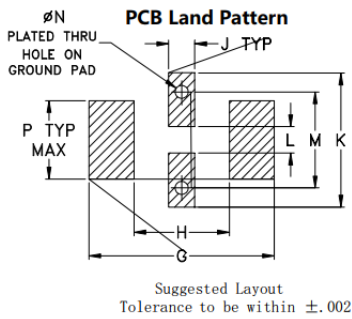
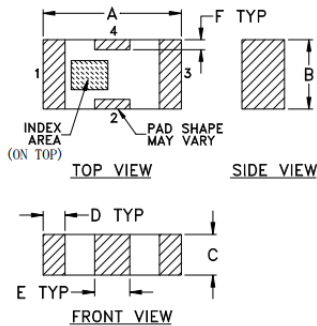
Maximum Rating

Operating Temperature	-55°C~+100°C
Storage Temperature	-55°C~+100°C
RF Input Power	3W max at 25°C

Pin Connections

RF Input	1
RF Output	3
Ground	2,4

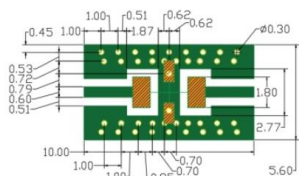
Outline Drawing



Outline Dimensions (Tolerance)

A	B	C	D	E	F	G	
3.20	1.60	0.95	0.51	0.81	0.23	4.29	
±0.2	±0.2	±0.2	±0.1	±0.1	±0.1		
H	J	K	L	M	N	P	wt
2.21	0.61	3.10	0.61	2.21	0.30	1.8	.020

Demo Board MCL P/N: T-39
Suggested PCB Layout (PL-137)



NOTES: 1. COPLANAR WAVEGUIDE PARAMETERS ARE SHOWN FOR ROGERS RO4350 WITH THICKNESS .508" ± .0015". COPPER: 1/2 OZ. EACH SIDE. FOR OTHER MATERIALS TRACE WIDTH & GAP MAY NEED TO BE MODIFIED.

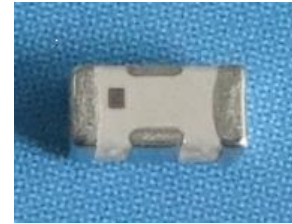
2. BOTTOM SIDE OF THE PCB IS CONTINUOUS GROUND PLANE.
DENOTES PCB COPPER LAYOUT WITH SMOBC (SOLDER MASK OVER BARE COPPER)
DENOTES COPPER LAND PATTERN FREE OF SOLDER MASK

Features

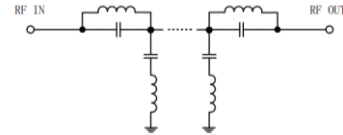
- High Performance
- Small Size
- Wide Band
- Ultra Low I.L.
- Temperature Stable
- LTCC Structure

Application

- Harmonic Rejection
- Transmitters/Receivers
- Lab Use



RoHS Compliant



Functional Schematic

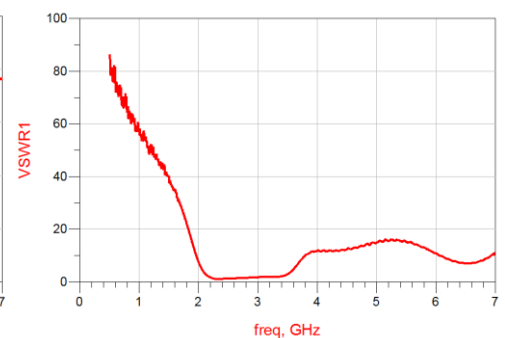
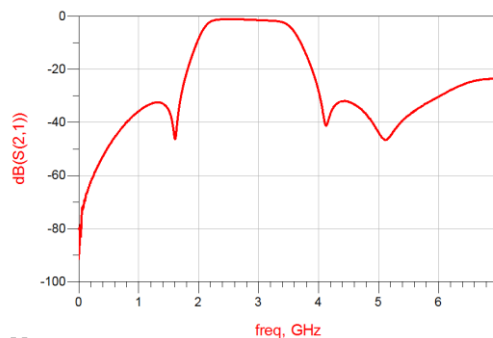
Electrical Specifications⁽¹⁾ at 25°C

Parameter	Frequency (MHz)	MIN	Typ.	MAX	Unit
Pass Band	Center Frequency	-	2850	-	MHz
	Insertion Loss	2750-2950	2.0	3.0	dB
	VSWR	2750-2950	1.6	2.5	:1
Stop Band	Rejection Loss	2100	21	28	dB
		5600-8000	20	25	dB

(1) Test on our Demo Board.

Typical Performance at 25°C

Frequency (MHz)	Insertion Loss (dB)	VSWR (:1)
50	74.6	235.1
500	48.87	85.55
1400	32.84	43.09
1500	35.33	40.11
2300	1.37	1.09
2500	1.17	1.28
2600	1.19	1.34
2750	1.24	1.47
2950	1.45	1.71
3500	3.53	2.92
4000	28.26	11.89
4200	36.55	11.88
4500	32.32	12.29
4800	37.16	13.84
5700	34.21	13.93



Notes:

- The specifications are tested at 25°C±5°C, relative humidity 55~75%.
- Other quality and characteristic not specify in this datasheet. Please contact us for detail requirements.



Well Genius Technology (Shanghai) LTD.

Room 1001, Block C, Hi-Tech Building, No.900 Yi Shan Rd, Shanghai, P.R.C, 200233

Tel: (021) 6495 8888

Fax: (021) 5423 5889

www.wellgenius.com