

High Pass Filter

WGLH-00440

50Ω 500 to 2500 MHz

Ver. A
2022.01.17

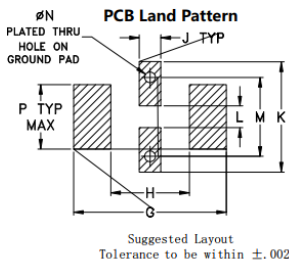
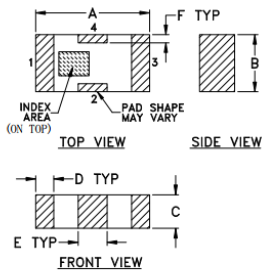
Maximum Rating

Operating Temperature	-55°C~+100°C
Storage Temperature	-55°C~+100°C
RF Input Power	7W max at 25°C

Pin Connections

RF Input	1
RF Output	3
Ground	2,4

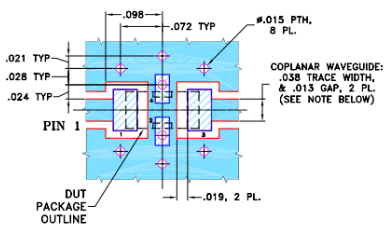
Outline Drawing



Outline Dimensions (Tolerance)

A	B	C	D	E	F	G	
3.20	1.60	0.95	0.51	0.81	0.23	4.29	
±0.2	±0.2	±0.2	±0.1	±0.1	±0.1		
H	J	K	L	M	N	P	wt
2.21	0.61	3.10	0.61	2.21	0.30	1.8	.020

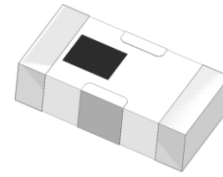
Demo Board MCL P/N: T-39 Suggested PCB Layout (PL-137)



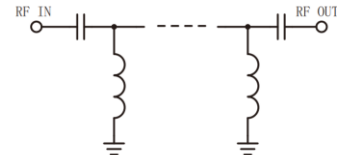
- NOTES: 1. COPLANAR WAVEGUIDE PARAMETERS ARE SHOWN FOR ROGERS RO4350B WITH THICKNESS .020" ± .0015". COPPER: 1/2 OZ. EACH SIDE. FOR OTHER MATERIALS TRACE WIDTH & GAP MAY NEED TO BE MODIFIED.
2. BOTTOM SIDE OF THE PCB IS CONTINUOUS GROUND PLANE.
- DENOTES PCB COPPER LAYOUT WITH SMOBC (SOLDER MASK OVER BARE COPPER)
 - DENOTES COPPER LAND PATTERN FREE OF SOLDER MASK

Features

- High Performance
- Small Size
- Wide Band
- Ultra Low I.L.
- Temperature Stable
- LTCC Structure



RoHS Compliant



Application

- Sub-Harmonic Rejection
- Transmitters/Receivers
- Base Station of Mobile Communication
- Lab Use

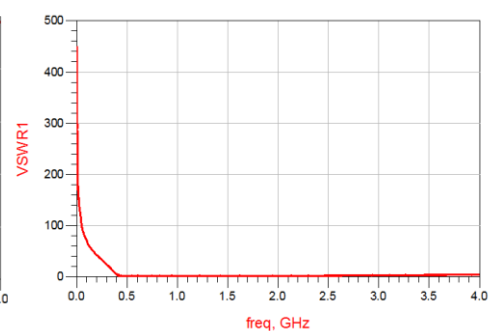
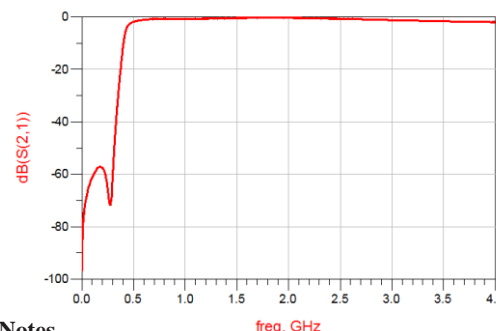
Electrical Specifications⁽¹⁾ at 25°C

Parameter	Frequency (MHz)	MIN	Typ.	MAX	Unit	
Pass Band	Insertion Loss	500-2500	-	1.3	2.0	dB
	Freq. Cut-off	450	-	3.0	-	dB
	VSWR	500-1700	-	1.6	2.0	:1
Stop Band	Rejection Loss	230	40	-	-	dB
		350	20	-	-	dB

(1) Tested on Demo Board.

Typical Performance at 25°C

Frequency (MHz)	Insertion Loss (dB)	VSWR (:1)
100	61.35	70.51
230	60.66	36.14
350	30.68	13.62
385	15.85	6.35
410	7.98	2.68
440	3.65	1.21
450	3.06	1.13
500	1.84	1.05
600	1.08	1.16
800	0.58	1.31
1000	0.71	1.62
1500	0.40	1.29
1700	0.32	1.08
2500	0.70	1.83
4000	1.98	3.53



Notes

- The specifications are tested at 25°C±5°C, relative humidity 55~75%.
- Other quality and characteristic not specify in this datasheet. Please contact us for detail requirements.



Well Genius Technology (Shanghai) LTD.