

High Pass Filter

WGLH-09700

50Ω 9700 to 16980 MHz

Ver. A
2022.12.13

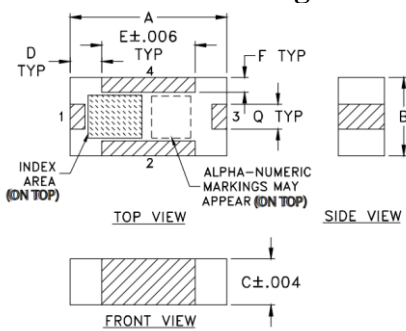
Maximum Rating

Operating Temperature	-55°C~+100°C
Storage Temperature	-55°C~+100°C
RF Input Power	7W max at 25°C

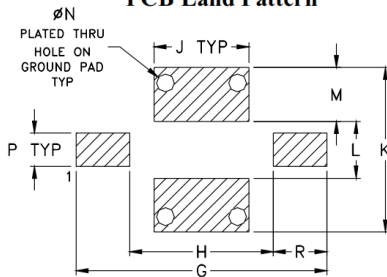
Pin Connections

RF Input	1
RF Output	3
Ground	2,4

Outline Drawing



PCB Land Pattern

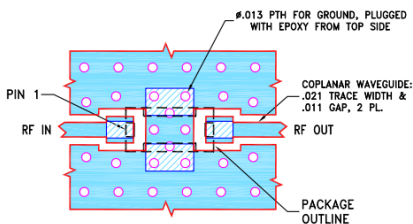


Suggested Layout,
Tolerance to be within ±002

Outline Dimensions (inch)

A	B	C	D	E	F	G	H	J
.126	.063	.037	.026	.075	.012	.182	.104	.069
3.20	1.60	0.94	0.66	1.91	0.30	4.62	2.64	1.75
K	L	M	N	P	Q	R	wt	grams
.119	.041	.039	.013	.024	.020	.039		
3.02	1.04	0.99	0.33	0.61	0.51	0.99	.020	

Demo Board MCL P/N: T-11 Suggested PCB Layout (PL-137)



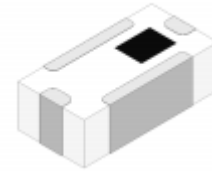
NOTES:

1. TRACE WIDTH & GAP PARAMETERS ARE SHOWN FOR ROGERS RO4350B WITH DIELECTRIC THICKNESS .010±.001, COPPER: 1/2 OZ. EACH SIDE. FOR OTHER MATERIALS TRACE WIDTH & GAP MAY NEED TO BE MODIFIED.
2. BOTTOM SIDE OF THE PCB IS CONTINUOUS GROUND PLANE.

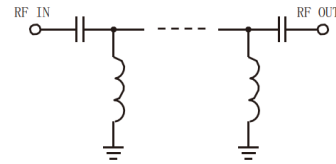
- DENOTES PCB COPPER LAYOUT WITH SMOBC (SOLDER MASK OVER BARE COPPER).
- DENOTES COPPER LAND PATTERN FREE OF SOLDER MASK.

Features

- High Performance
- Small Size
- Wide Band
- Ultra Low I.L.
- Temperature Stable
- LTCC Structure



RoHS Compliant



Application

- Harmonic Rejection
- Transmitters/Receivers
- Lab Use

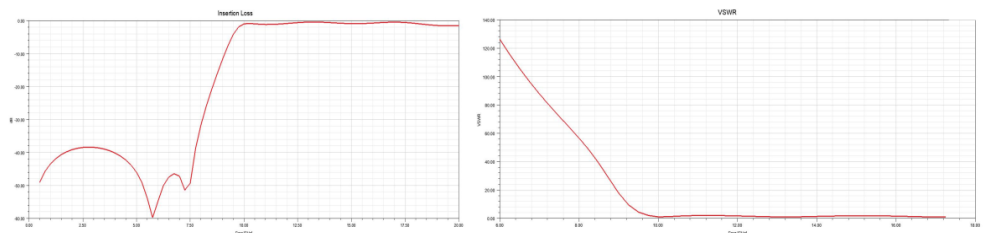
Electrical Specifications⁽¹⁾ at 25°C

Parameter	Frequency (MHz)	MIN	Typ.	MAX	Unit	
Pass Band	Insertion Loss	9700-16980	-	1.3	3.0	dB
	Freq. Cut-off	9070	-	3.0	-	dB
	VSWR	9700-16980	-	1.5	2.0	:1
Stop Band	Rejection Loss	6770	25	-	-	dB
		7550	18	-	-	dB

(1) Tested on Demo Board.

Typical Performance at 25°C

Frequency (MHz)	Insertion Loss (dB)	VSWR (:1)
50	61.91	1737.2
1000	38.60	1500.4
1960	35.58	157.9
3250	40.06	69.49
4170	39.69	32.79
5020	26.83	27.16
6680	22.27	25.72
7570	20.04	21.40
9750	3.03	1.47
10500	1.92	1.46
11580	1.17	1.34
12610	1.73	1.40
13530	1.95	1.52
15440	1.65	2.03
17000	2.01	2.11



Notes

- The specifications are tested at 25°C±5°C, relative humidity 55~75%.
- Other quality and characteristic not specify in this datasheet. Please contact us for detail requirements.



Well Genius Technology (Shanghai) LTD.

Room 1001, Block C, Hi-Tech Building, No.900 Yi Shan Rd, Shanghai, P.R.C, 200233

Tel: (021) 6495 8888

Fax: (021) 5423 5889

www.wellgenius.com