

Low Pass Filter

WGLL-01525-2012

50Ω DC to 1525 MHz

Ver. A
2022.03.16

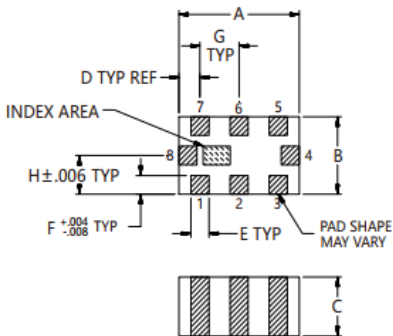
Maximum Rating

Operating Temperature	-55°C~+125°C
Storage Temperature	-55°C~+125°C
RF Input Power	5.5W max at 25°C

Pin Connections

RF Input	8
RF Output	4
Ground	1,2,3,5,6,7

Outline Drawing

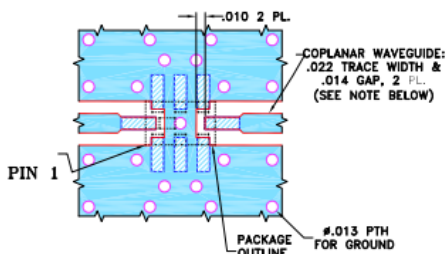


Outline Dimensions (inch)

A	B	C	D	E	F	G	Wt.
.079	.049	.037	.014	.012	.012	.026	grams
2.00	1.25	0.95	0.35	0.30	0.30	0.65	.008

Note: Please refer to case style drawing for details

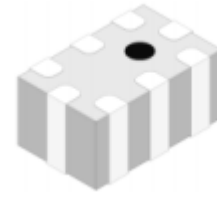
Demo Board MCL P/N: CG-2012 Suggested PCB Layout



- NOTES:
- COPLANAR WAVEGUIDE IS SHOWN FOR ROGERS RO4350B WITH DIELECTRIC THICKNESS .010" ± .001". COPPER: 1/2 OZ. EACH SIDE. FOR OTHER MATERIALS TRACE WIDTH AND GAP MAY NEED TO BE MODIFIED.
 - BOTTOM SIDE OF THE PCB IS CONTINUOUS GROUND PLANE.
- DENOTES PCB COPPER LAYOUT WITH SMOBC (SOLDER MASK OVER BARE COPPER).
 - DENOTES COPPER LAND PATTERN FREE OF SOLDER MASK.

Features

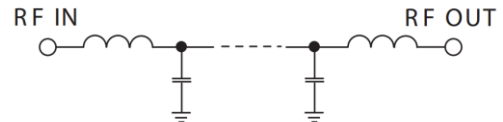
- High Performance
- Small Size
- Wide Band
- Ultra Low I.L.
- Temperature Stable
- LTCC Structure



RoHS Compliant

Application

- Harmonic Rejection
- Transmitters/Receivers
- Lab Use



Functional Schematic

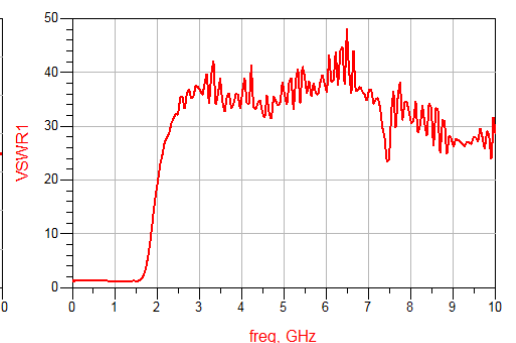
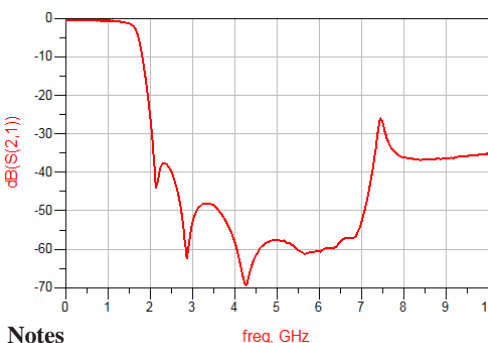
Electrical Specifications⁽¹⁾ at 25°C

Parameter		Frequency (MHz)	MIN	Typ.	MAX	Unit
Pass Band	Insertion Loss	DC-1525	-	1.5	2.0	dB
	Freq. Cut-off	1710	-	3.0	-	dB
	VSWR	DC-1525	-	1.5	-	:1
Stop Band	Rejection Loss	2125-2350	20	30	-	dB
		2350-2850	30	40	-	dB
		2850-7000	40	50	-	dB
		7000-12000	25	30	-	dB

(1) Tested on Demo Board.

Typical Performance at 25°C

Frequency (MHz)	Insertion Loss (dB)	VSWR (:1)
100	0.313	1.250
1000	0.517	1.131
1500	1.255	1.221
1700	4.164	2.681
1844	12.27	8.810
2141	43.59	25.29
2245	38.63	28.08
2461	39.08	32.25
2867	62.26	35.78
3472	48.45	37.73
4507	61.43	32.17
5504	60.40	38.26
6509	57.85	44.28
7000	52.48	36.42
7500	27.52	26.17



Notes

- The specifications are tested at 25°C±5°C, relative humidity 55~75%.
- Other quality and characteristic not specify in this datasheet. Please contact us for detail requirements.



Well Genius Technology (Shanghai) LTD.

Room 1001, Block C, Hi-Tech Building, No.900 Yi Shan Rd, Shanghai, P.R.C, 200233

Tel: (021) 6495 8888

Fax: (021) 5423 5889

www.wellgenius.com