

High Pass Filter

WGLH-01200

50Ω 1220 to 4600 MHz

Ver. A

2022.01.27

Maximum Rating

Operating Temperature -55°C~+100°C

Storage Temperature -55°C~+100°C

RF Input Power 7W max at 25°C

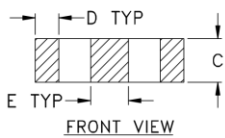
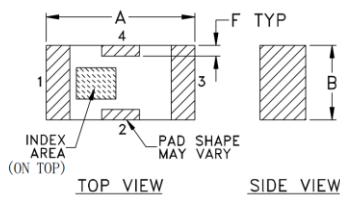
Pin Connections

RF Input 1

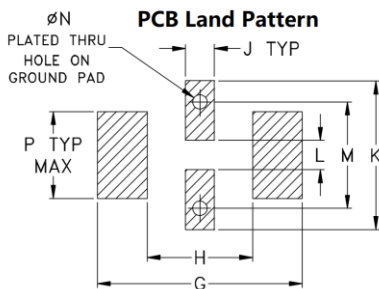
RF Output 3

Ground 2,4

Outline Drawing



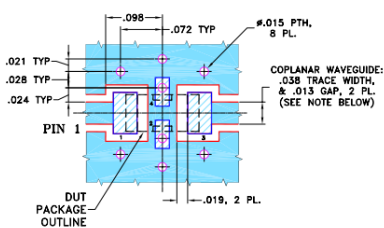
PCB Land Pattern



Outline Dimensions (Tolerance) mm

A	B	C	D	E	F	G	
3.20	1.60	0.95	0.51	0.81	0.23	4.29	
±0.2	±0.2	±0.2	±0.1	±0.1	±0.1		
H	J	K	L	M	N	P	wt
2.21	0.61	3.10	0.61	2.21	0.30	1.8	.020

Demo Board MCL P/N: T-39 Suggested PCB Layout (PL-137)



- NOTES:
1. COPLANAR WAVEGUIDE PARAMETERS ARE SHOWN FOR ROGERS RO4350B WITH THICKNESS .020" ± .0015". COPPER: 1/2 OZ. EACH SIDE. FOR OTHER MATERIALS TRACE WIDTH & GAP MAY NEED TO BE MODIFIED.
 2. BOTTOM SIDE OF THE PCB IS CONTINUOUS GROUND PLANE.

Features

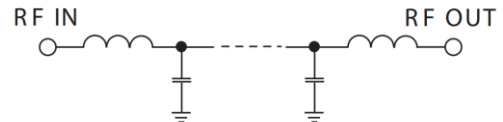
- High Performance
- Small Size
- Wide Band
- Ultra Low I.L.
- Temperature Stable
- LTCC Structure

Application

- Harmonic Rejection
- Transmitters/Receivers
- Lab Use



RoHS Compliant



Functional Schematic

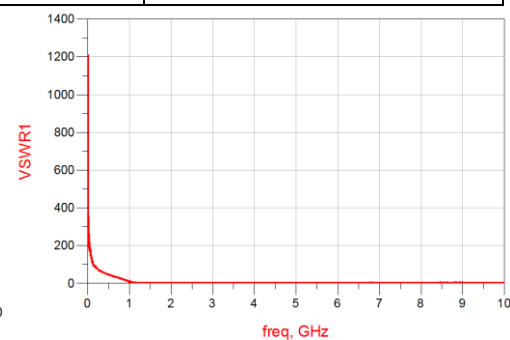
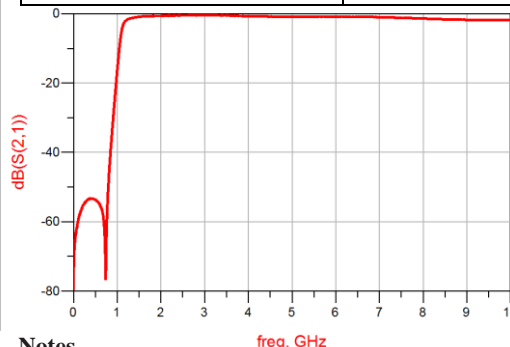
Electrical Specifications⁽¹⁾ at 25°C

Parameter	Frequency (MHz)	MIN	Typ.	MAX	Unit	
Pass Band	Insertion Loss	1220-4600	-	1.3	2.0	dB
	Freq. Cut-off	1180	-	3.0	-	dB
	VSWR	1300-3200	-	1.5	2.0	:1
Stop Band	Rejection Loss	750	40	65	-	dB
		910	20	30	-	dB

(1) Tested on Demo Board.

Typical Performance at 25°C

Frequency (MHz)	Insertion Loss (dB)	VSWR (:1)
1.0	70.00	1400
100	60.16	122.9
750	65.23	29.30
910	29.59	17.05
1050	9.74	5.21
1130	3.41	1.06
1180	2.20	1.22
1220	1.80	1.09
1300	1.38	1.06
1380	1.14	1.09
3200	0.44	1.21
4000	0.70	1.70
4600	0.83	1.90
6000	0.84	1.94
7000	1.10	2.12



Notes

- The specifications are tested at 25°C±5°C, relative humidity 55~75%.
- Other quality and characteristic not specify in this datasheet. Please contact us for detail requirements.



Well Genius Technology (Shanghai) LTD.

Room 1001, Block C, Hi-Tech Building, No.900 Yi Shan Rd, Shanghai, P.R.C, 200233

Tel: (021) 6495 8888

Fax: (021) 5423 5889

www.wellgenius.com