

# Band Pass Filter

WGLB-00960

50Ω

710 to 1210 MHz

Ver. B

2018.7.4

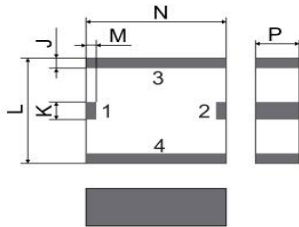
## Maximum Rating

Operating Temperature	-40°C~+85°C
Storage Temperature	-40°C~+85°C
RF Input Power	10W max at 25°C

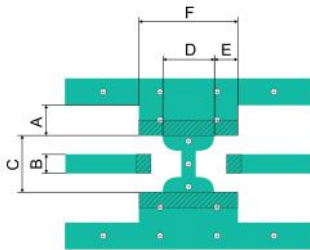
## Pin Connections

RF Input	1
RF Output	2
Ground	3,4

## Outline Drawing



## Demo Board PCB Layout



## Dimensions (±0.10mm)

A	B	C	D
2.50	1.20	3.60	3.40
E	F	J	K
1.60	6.60	0.40	0.70
L	M	N	P
4.20	0.35	4.80	1.50

1. Unit: mm

Tolerance: ±0.1mm

2. Material: Rogers R04350B

PCB Thickness: H=0.508mm

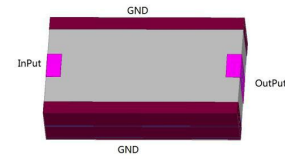
Copper Thickness: T=35μm

## Features

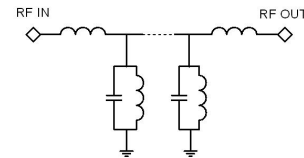
- High Performance
- Small Size
- Wide Band
- Ultra Low I.L.
- Temperature Stable
- LTCC Structure

## Application

- Test and Measurement
- Harmonic Rejection
- Transmitters/Receivers



RoHS Compliant



Functional Schematic

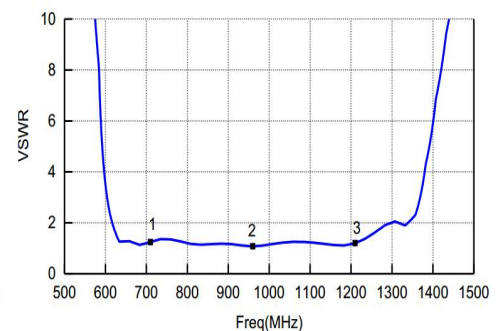
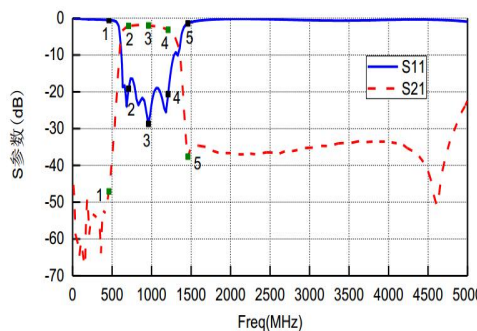
## Electrical Specifications<sup>(1)</sup> at 25°C

Parameter	Frequency (MHz)	MIN	Typ.	MAX	Unit	
Pass Band	Insertion Loss	710-1210	-	2.1	3.5	dB
	VSWR	710-1210	-	1.2	1.8	:1
	Group Delay	710-1210	-	-	3.5	ns
Stop Band	Rejection Loss	DC-460	35	-	-	dB
		1260-3000	30	-	-	dB

(1) Test on our Demo Board.

## Typical Performance at 25°C

Frequency (MHz)	Insertion Loss (dB)	Return Loss (dB)
10	45.27	0.11
272	52.91	0.33
534	29.61	0.75
796	1.85	20.08
1058	2.26	18.99
1320	6.07	9.70
1582	34.60	0.73
1844	36.55	0.31
2106	37.06	0.19
2369	36.65	0.25
2632	36.65	0.37
2895	35.55	0.50
3158	34.65	0.62
3421	33.89	0.65
3684	33.40	0.59



## Notes

- The specifications are tested at 25°C±5°C, relative humidity 55~75%.
- Other quality and characteristic not specify in this datasheet. Please contact us for detail requirements.



Well Genius Technology (Shanghai) LTD.

Room 904, Block B, Hi-Tech Building, No.900 Yi Shan Rd, Shanghai, P.R.C Tel: (021) 6495 8888 Fax: (021) 5423 5889 Zip Code: 200233