

Band Pass Filter

WGLB-04700-1608

50Ω 4400 to 5000 MHz

Ver. A
2021.05.18

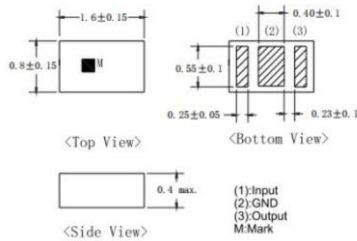
Maximum Rating

Operating Temperature	-40°C~+85°C
Storage Temperature	-55°C~+125°C
RF Input Power	3W max at 25°C

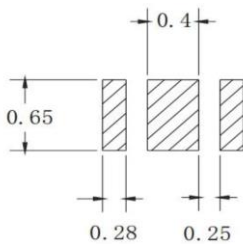
Pin Connections

RF Input	1
RF Output	3
Ground	2

Outline Drawing



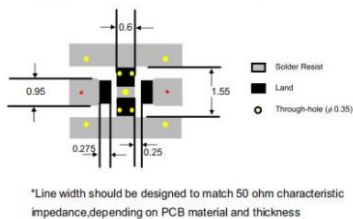
PCB Land Pattern(mm)



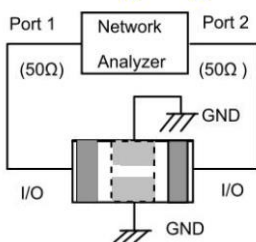
SUGGESTED LAYOUT

TOLERANCE TO BE WITHIN ±0.05mm

Suggested PCB Layout



Measuring Diagram

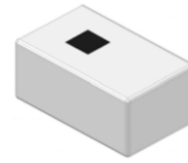


Features

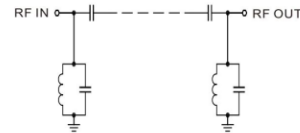
- High Performance
- Small Size
- Wide Band
- Ultra Low I.L.
- Temperature Stable
- LTCC Structure

Application

- Harmonic Rejection
- Transmitters/Receivers
- Lab Use



RoHS Compliant



Functional Schematic

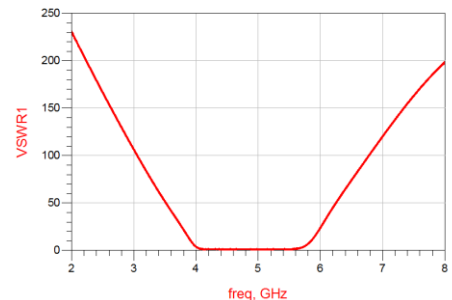
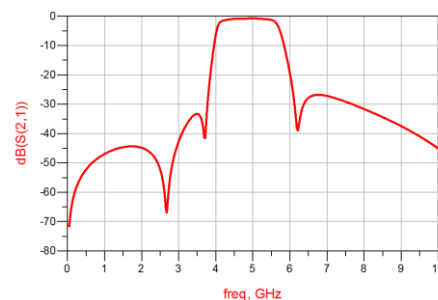
Electrical Specifications⁽¹⁾ at 25°C

Parameter		Frequency (MHz)	MIN	Typ.	MAX	Unit
Pass Band	Center Frequency	-	-	4700	-	MHz
	Insertion Loss	4400-5000	-	1.0	1.5	dB
	VSWR	4400-5000	-	1.5	2.0	:1
Stop Band	Rejection Loss	440-915	35	45	-	dB
		925-2485	30	40	-	dB
		2485-3600	20	30	-	dB
		5850-6100	7	10	-	dB
		6100-6980	15	25	-	dB
		8800-15000	25	35	-	dB

(1) Test on our Demo Board.

Typical Performance at 25°C

Frequency (MHz)	Insertion Loss (dB)	VSWR (:1)
500	52.3	601.5
1000	46.96	385.26
2000	44.88	230.38
3000	42.65	106.22
4000	6.25	3.8
4400	1.04	1.16
4700	0.86	1.25
5000	0.8	1.09
6500	27.84	74.13
7000	27.21	120.19
7500	39.3	163.1
8000	31.66	198.4
8800	36.22	234.7
9000	37.49	240.04
10000	45.16	249.7



Notes:

- The specifications are tested at 25°C±5°C, relative humidity 55~75%.
- Other quality and characteristic not specify in this datasheet. Please contact us for detail requirements.



Well Genius Technology (Shanghai) LTD.