

# Band Pass Filter

## WGLB-04300

50Ω      4000 to 4600 MHz

Ver. A  
2020.10.24

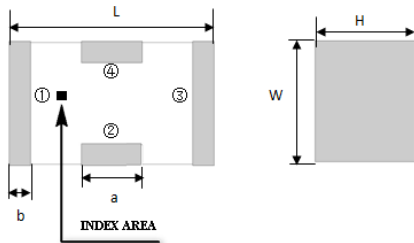
### Maximum Rating

Operating Temperature	-55°C~+100°C
Storage Temperature	-55°C~+100°C
RF Input Power	3W max at 25°C

### Pin Connections

RF Input	1
RF Output	3
Ground	2,4

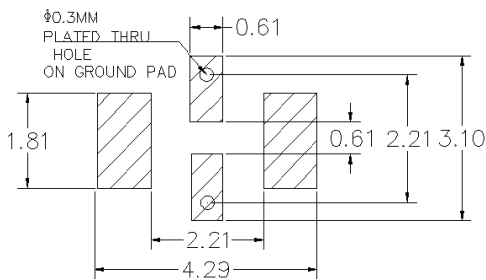
### Outline Drawing



### Outline Dimension(mm)

W	L	H
1.6±0.2	3.2±0.2	1.0±0.2
a	b	
0.8±0.1	0.5±0.1	

### PCB Land Pattern(mm)



#### SUGGESTED LAYOUT

TOLERANCE TO BE WITHIN ±0.05mm

### Features

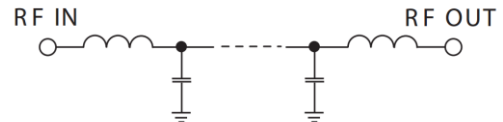
- High Performance
- Small Size
- Wide Band
- Ultra Low I.L.
- Temperature Stable
- LTCC Structure

### Application

- Harmonic Rejection
- Transmitters/Receivers
- Lab Use



RoHS Compliant



Functional Schematic

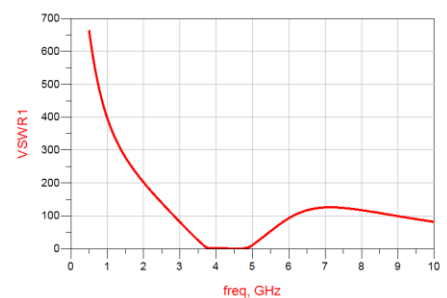
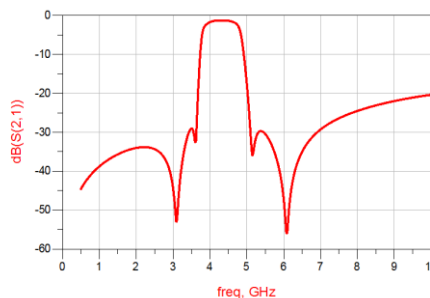
### Electrical Specifications<sup>(1)</sup> at 25°C

Parameter		Frequency (MHz)	MIN	Typ.	MAX	Unit
Pass Band	Center Frequency	-	-	4300	-	MHz
	Insertion Loss	4000-4600	-	2.0	3.0	dB
	VSWR	4000-4600	-	1.5	2.0	:1
Stop Band	Rejection Loss	DC-3250	20	25	-	dB
		5100-7000	20	25	-	dB
		9000	15	22	-	dB

(1) Test on our Demo Board.

### Typical Performance at 25°C

Frequency (MHz)	Insertion Loss (dB)	VSWR (:1)
500	44.56	661.6
1000	38.78	397.1
2000	34.05	201.8
3000	44.57	81.12
4000	1.75	1.43
4300	1.34	1.32
4600	1.64	1.25
5100	30.65	19.41
6000	47.33	92.77
6500	35	116.9
7000	39.3	125.5
7500	26.43	123.9
8000	24.54	117.3
8500	23.13	108.5
9000	22.02	99.13



### Notes:

- The specifications are tested at 25°C±5°C, relative humidity 55~75%.
- Other quality and characteristic not specify in this datasheet. Please contact us for detail requirements.



Well Genius Technology (Shanghai) LTD.

Room 904, Block B, Hi-Tech Building, No.900 Yi Shan Rd, Shanghai, P.R.C Tel: (021) 6495 8888 Fax: (021) 5423 5889 Zip Code: 200233