

Band Pass Filter

WGLB-03750-1608

50Ω 3300 to 4200 MHz

Ver. D
2021.08.23

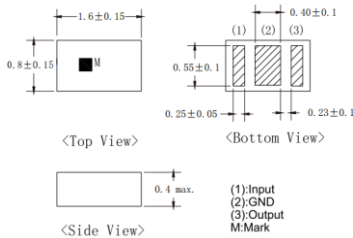
Maximum Rating

Operating Temperature	-40°C~+85°C
Storage Temperature	-55°C~+125°C
RF Input Power	1W max at 25°C

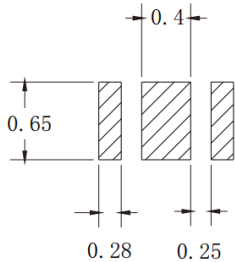
Pin Connections

RF Input	1
RF Output	3
Ground	2

Outline Drawing



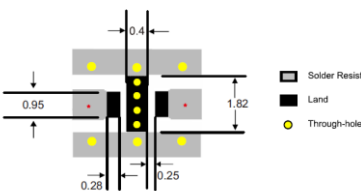
PCB Land Pattern(mm)



SUGGESTED LAYOUT

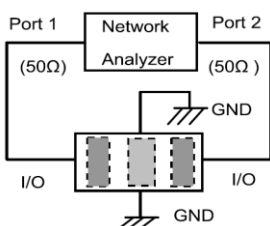
TOLERANCE TO BE WITHIN ±0.002mm

Suggested PCB Layout



*Line width should be designed to match 50 ohm characteristic impedance, depending on PCB material and thickness

Measuring Diagram

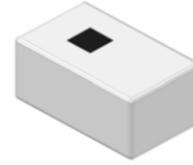


Features

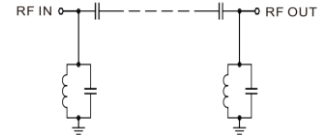
- High Performance
- Small Size
- Wide Band
- Ultra Low I.L.
- Temperature Stable
- LTCC Structure

Application

- Harmonic Rejection
- Transmitters/Receivers
- Lab Use



RoHS Compliant



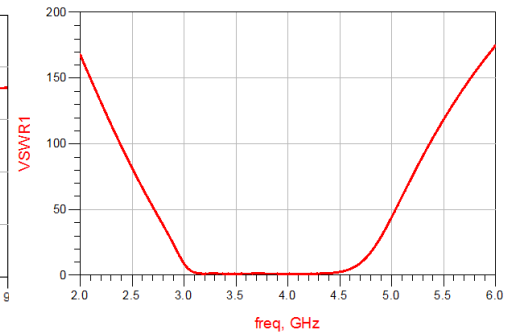
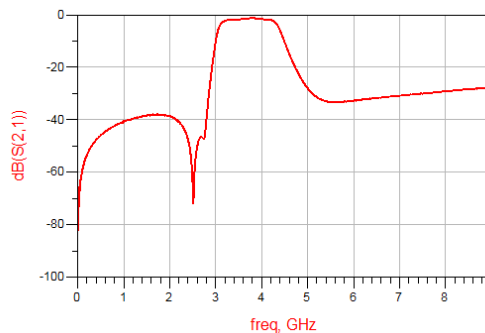
Functional Schematic

Parameter		Frequency (MHz)	MIN	Typ.	MAX	Unit
Pass Band	Center Frequency	-	-	3750	-	MHz
	Insertion Loss	3300-4200	-	1.5	2.0	dB
	VSWR	3300-4200	-	1.5	2.0	:1
Stop Band	Rejection Loss	100-2570	30	40	-	dB
		2620-2690	25	35	-	dB
		5150-5925	15	25	-	dB
		6600-8100	25	35	-	dB
		9900-12600	25	35	-	dB

(1) Test on our Demo Board @ 25°C

Typical Performance at 25°C

Frequency (MHz)	Insertion Loss (dB)	VSWR (:1)
1000	40.84	95.95
2170	40.52	60.45
2500	66.53	39.12
3340	1.824	1.462
3750	1.314	1.317
4200	1.975	1.569
4500	10.56	11.42
5000	28.02	162.1
5500	33.31	37.91
6000	32.73	39.58
7000	30.81	98.98
8000	29.19	41.61
8500	28.37	44.04
9000	27.81	36.27
10000	26.39	40.12



Notes:

- The specifications are tested at 25°C±5°C, relative humidity 55~75%.
- Other quality and characteristic not specify in this datasheet. Please contact us for detail requirements.



Well Genius Technology (Shanghai) LTD.

Room 1001, Block C, Hi-Tech Building, No.900 Yi Shan Rd, Shanghai, P.R.C, 200233

Tel: (021) 6495 8888

Fax: (021) 5423 5889

www.wellgenius.com