

# Band Pass Filter

## WGLB-03750-1608

50Ω      3300 to 4200 MHz

Ver. C  
2021.03.19

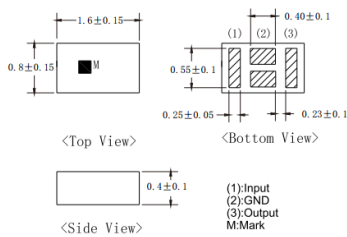
### Maximum Rating

Operating Temperature	-40°C~+85°C
Storage Temperature	-40°C~+85°C
RF Input Power	2W max at 25°C

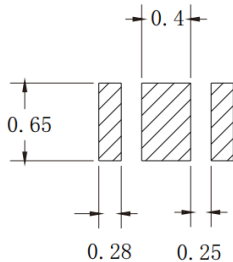
### Pin Connections

RF Input	1
RF Output	3
Ground	2

### Outline Drawing



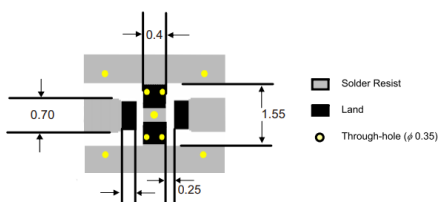
### PCB Land Pattern(mm)



### SUGGESTED LAYOUT

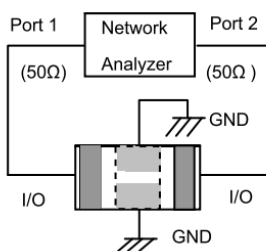
TOLERANCE TO BE WITHIN ±0.002mm

### Suggested PCB Layout



Tolerance to be within ±0.002 Line width should be designed to match 50 characteristic impedance, depending on PCB material and thickness

### Measuring Diagram

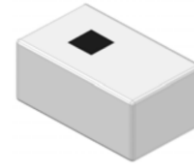


### Features

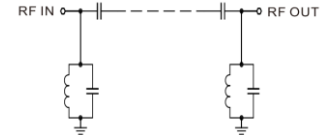
- High Performance
- Small Size
- Wide Band
- Ultra Low I.L.
- Temperature Stable
- LTCC Structure

### Application

- Harmonic Rejection
- Transmitters/Receivers
- Lab Use



### RoHS Compliant



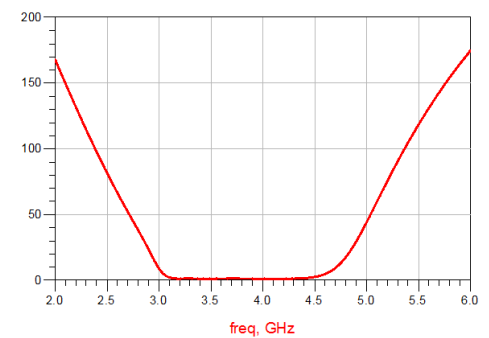
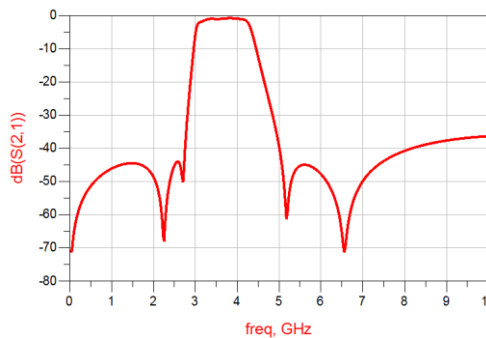
### Functional Schematic

Parameter	Frequency (MHz)	MIN	Typ.	MAX	Unit
Pass Band	Center Frequency	-	3750	-	MHz
	Insertion Loss	3300-4200	1.5	2.0	dB
	VSWR	3300-4200	1.5	2.0	:1
Stop Band	Rejection Loss	100-2570	30	40	dB
		2620-2690	25	35	dB
		5150-5925	15	25	dB
		6600-8100	25	35	dB
		9900-12600	25	35	dB

(1) Test on our Demo Board @ 25°C

### Typical Performance at 25°C

Frequency (MHz)	Insertion Loss (dB)	VSWR (:1)
1000	46.02	467.2
2170	57.06	156.68
2500	45.22	87.98
3340	1.03	1.15
3750	0.85	1.254
4200	1.46	1.28
4500	12.54	18.48
5000	36.4	49.50
5500	45.32	185.9
6000	47.80	241.8
7000	49.93	287.5
8000	40.80	289.0
8500	38.91	283.2
9000	37.69	265.8
10000	36.39	275.7



### Notes:

- The specifications are tested at 25°C±5°C, relative humidity 55~75%.
- Other quality and characteristic not specify in this datasheet. Please contact us for detail requirements.



Well Genius Technology (Shanghai) LTD.