

Band Pass Filter

WGLB-02450-1005

50Ω 2400 to 2500 MHz

Ver. A
2021.2.18

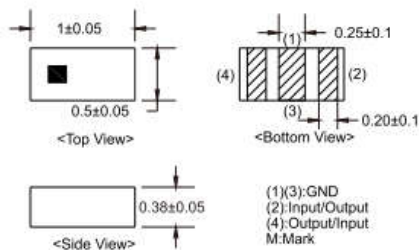
Maximum Rating

Operating Temperature	-40°C~+85°C
Storage Temperature	-55°C~+100°C
RF Input Power	2W max at 25°C

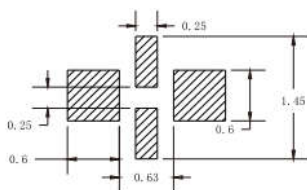
Pin Connections

RF Input	4
RF Output	2
Ground	1,3

Outline Drawing

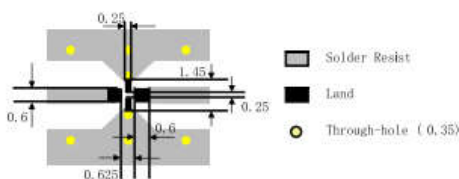


PCB Land Pattern



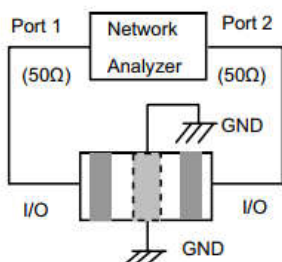
Tolerance to be within ±0.002
Solder Paste: SAC 305 Type is Recommended

Demo Board Suggested PCB Layout



Tolerance to be within ±0.002 Line width should be designed to match 50 characteristic impedance, depending on PCB material and thickness.

Measuring Diagram

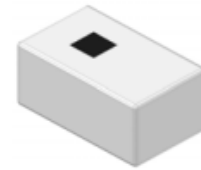


Features

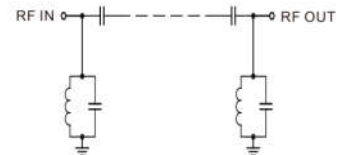
- High Performance
- Small Size
- Wide Band
- Ultra Low I.L.
- Temperature Stable
- LTCC Structure

Application

- Smart Phone
- Bluetooth headsets, TWS etc
- WLAN, WiFi etc



RoHS Compliant



Functional Schematic

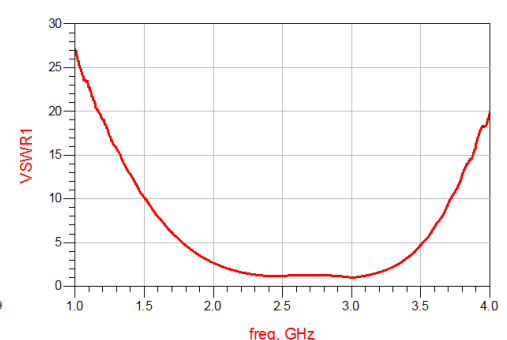
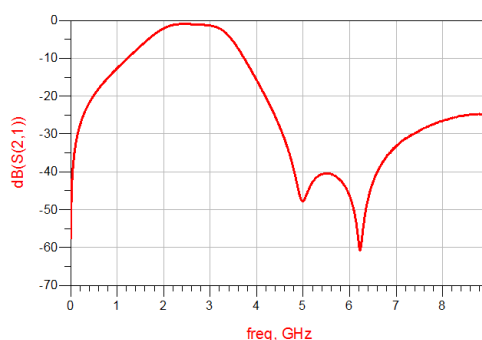
Electrical Specifications⁽¹⁾ at 25°C

Parameter	Frequency (MHz)	MIN	Typ.	MAX	Unit	
Pass Band	Insertion Loss	2400-2500	-	1.2	1.3	dB
	VSWR	2400-2500	-	1.2	1.3	:1
Stop Band	Rejection Loss	880-960	10	-	-	dB
		4800-5000	25	-	-	dB
		7200-7500	25	-	-	dB

(1) Test on our Demo Board.

Typical Performance at 25°C

Frequency (MHz)	Insertion Loss (dB)	Return Loss (dB)
100	33.25	142.3
700	16.55	41.99
1200	10.26	19.03
2000	2.65	3.73
2100	1.92	2.67
2300	1.53	1.52
2400	1.22	1.19
2500	1.25	1.01
2550	1.83	1.08
3000	3.64	1.71
3600	15.66	26.89
4200	22.43	107.67
5000	37.57	184.45
7200	31.2	195.83
8000	26.58	209.78



Notes

- The specifications are tested at 25°C±5°C, relative humidity 55~75%.
- Other quality and characteristic not specify in this datasheet. Please contact us for detail requirements.



Well Genius Technology (Shanghai) LTD.