

Band Pass Filter

WGLB-01860

50Ω 1580 to 2200 MHz

Ver. B
2021.06.01

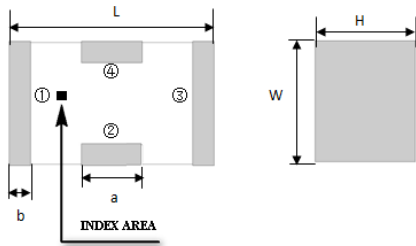
Maximum Rating

Operating Temperature	-55°C~+100°C
Storage Temperature	-55°C~+100°C
RF Input Power	3W max at 25°C

Pin Connections

RF Input	1
RF Output	3
Ground	2,4

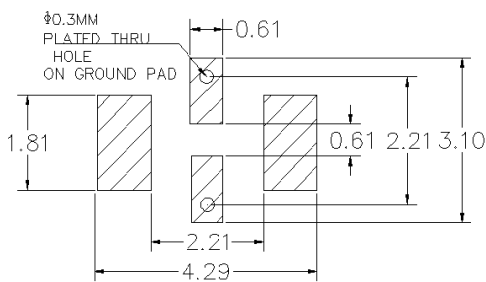
Outline Drawing



Outline Dimension(mm)

W	L	H
1.6±0.2	3.2±0.2	1.0±0.2
a	b	
0.8±0.1	0.5±0.1	

PCB Land Pattern(mm)



SUGGESTED LAYOUT

TOLERANCE TO BE WITHIN ±0.05mm

Features

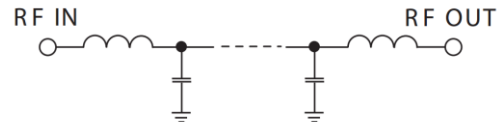
- High Performance
- Small Size
- Wide Band
- Ultra Low I.L.
- Temperature Stable
- LTCC Structure

Application

- Harmonic Rejection
- Transmitters/Receivers
- Lab Use



RoHS Compliant



Functional Schematic

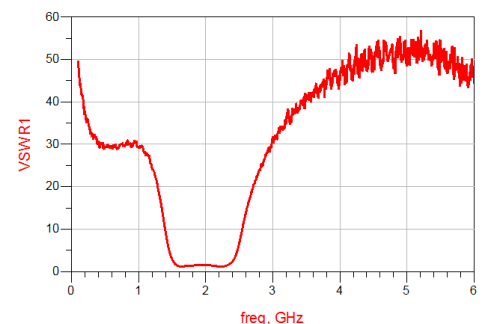
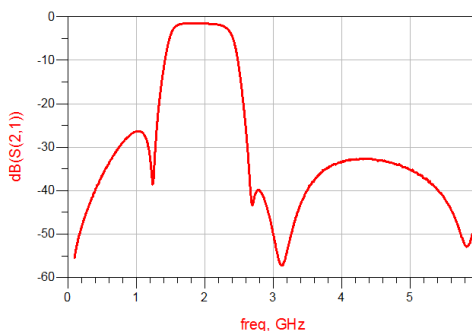
Electrical Specifications⁽¹⁾ at 25°C

Parameter		Frequency (MHz)	MIN	Typ.	MAX	Unit
Pass Band	Center Frequency	-	-	1860	-	MHz
	Insertion Loss	1580-2200	-	2.0	3.5	dB
	VSWR	1580-2200	-	1.5	2.5	:1
Stop Band	Rejection Loss	DC-1200	20	30	-	dB
		2600-4800	15	25	-	dB
		5000	20	30	-	dB

(1) Test on our Demo Board.

Typical Performance at 25°C

Frequency (MHz)	Insertion Loss (dB)	VSWR (:1)
100	55.40	49.47
300	43.91	31.95
500	36.58	29.31
1000	26.39	29.24
1200	32.22	24.21
1400	11.89	9.24
1580	2.13	1.36
2000	1.56	1.508
2200	1.81	1.16
2700	43.22	19.58
3000	50.03	31.91
3500	39.84	40.75
4000	33.59	45.14
4500	32.95	47.68
5700	48.39	47.45



Notes:

- The specifications are tested at 25°C±5°C, relative humidity 55~75%.
- Other quality and characteristic not specify in this datasheet. Please contact us for detail requirements.



Well Genius Technology (Shanghai) LTD.

Room 1001, Block C, Hi-Tech Building, No.900 Yi Shan Rd, Shanghai, P.R.C, 200233

Tel: (021) 6495 8888

Fax: (021) 5423 5889

www.wellgenius.com