

# Band Pass Filter

## WGLB-01855-A

50Ω      1790 to 1920 MHz

Ver. A  
2018.9.28

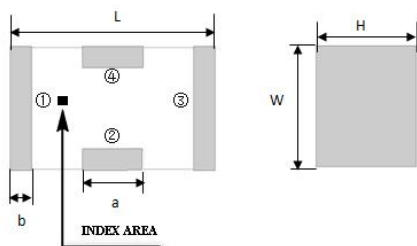
### Maximum Rating

Operating Temperature	-40°C~+85°C
Storage Temperature	-40°C~+85°C
RF Input Power	10W max at 25°C

### Pin Connections

RF Input	1
RF Output	2
Ground	3,4

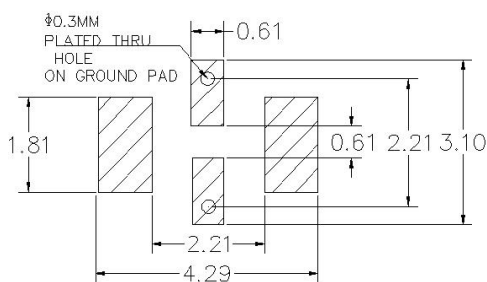
### Outline Drawing



### Outline Dimension(mm)

W	L	H
1.6±0.2	3.2±0.2	1.0±0.2
a	b	
0.8±0.1	0.5±0.1	

### PCB Land Pattern(mm)



### SUGGESTED LAYOUT

TOLERANCE TO BE WITHIN ±0.05mm

### Features

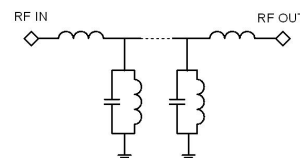
- High Performance
- Small Size
- Wide Band
- Ultra Low I.L.
- Temperature Stable
- LTCC Structure

### Application

- Test and Measurement
- Harmonic Rejection
- Transmitters/Receivers



RoHS Compliant



Functional Schematic

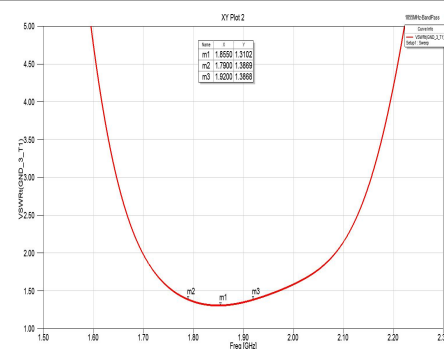
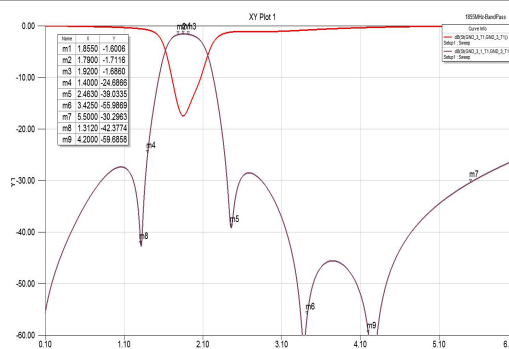
### Electrical Specifications<sup>(1)</sup> at 25°C

Parameter	Frequency (MHz)	MIN	Typ.	MAX	Unit	
Pass Band	Insertion Loss	1790-1920	-	1.7	3.0	dB
	VSWR	1790-1920	-	1.5	2.5	:1
Stop Band	Rejection Loss	DC-1400	20	25	-	dB
		3700-5500	20	25	-	dB

(1) Test on our Demo Board.

### Typical Performance at 25°C

Frequency (MHz)	Insertion Loss (dB)	Return Loss (dB)
100	55.57	0.04
300	44.57	0.07
500	37.72	0.12
1000	27.56	0.30
1200	29.23	0.45
1400	24.68	0.81
1500	13.58	1.43
1800	1.67	16.29
1920	1.68	15.8
2400	28.74	1.38
2800	29.36	1.12
3900	46.62	0.49
4200	59.68	0.35
4800	38.89	0.16
5700	28.62	0.11



### Notes

- The specifications are tested at 25°C±5°C, relative humidity 55~75%.
- Other quality and characteristic not specify in this datasheet. Please contact us for detail requirements.



Well Genius Technology (Shanghai) LTD.