

Band Pass Filter

WGLB-01855

50Ω 1790 to 1920 MHz

Ver. A
2019.6.26

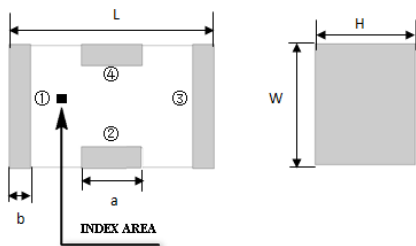
Maximum Rating

Operating Temperature	-55°C~+100°C
Storage Temperature	-55°C~+100°C
RF Input Power	5W max at 25°C

Pin Connections

RF Input	1
RF Output	3
Ground	2,4

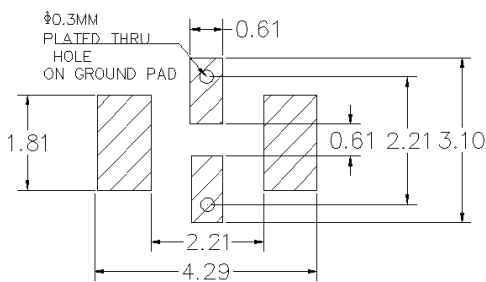
Outline Drawing



Outline Dimension(mm)

W	L	H
1.6±0.2	3.2±0.2	1.0±0.2
a	b	
0.8±0.1	0.5±0.1	

PCB Land Pattern(mm)



SUGGESTED LAYOUT

TOLERANCE TO BE WITHIN ±0.05mm

Features

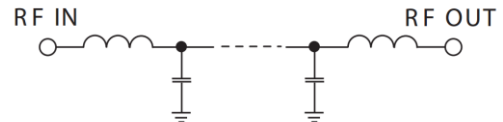
- High Performance
- Small Size
- Wide Band
- Ultra Low I.L.
- Temperature Stable
- LTCC Structure

Application

- Harmonic Rejection
- Transmitters/Receivers
- Lab Use



RoHS Compliant



Functional Schematic

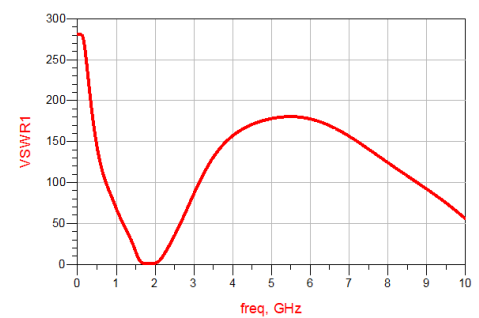
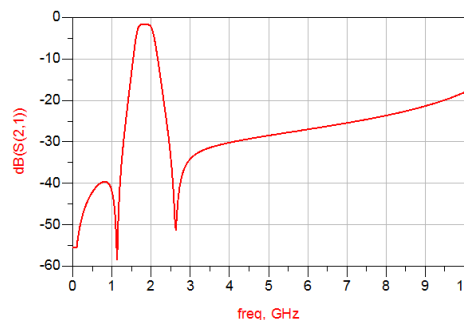
Electrical Specifications⁽¹⁾ at 25°C

Parameter		Frequency (MHz)	MIN	Typ.	MAX	Unit
Pass Band	Center Frequency	-	-	1855	-	MHz
	Insertion Loss	1790-1920	-	2.0	3.0	dB
	VSWR	1790-1920	-	1.5	2.5	:1
Stop Band	Rejection Loss	DC-1400	20	30	-	dB
		3700-5500	20	30	-	dB
		7000	15	25	-	dB

(1) Test on our Demo Board.

Typical Performance at 25°C

Frequency (MHz)	Insertion Loss (dB)	VSWR (:1)
50	55.5	280.56
300	46.16	215.9
500	42.12	143.8
1000	42.10	67.7
1200	40.9	47.13
1400	21.1	27.5
1500	13.12	15.3
1800	1.716	1.41
1920	1.74	1.21
2410	26.39	27.3
2800	37.71	65.42
3900	30.42	153.18
4200	29.83	163.8
4800	28.8	175.8
5700	27.46	179.9



Notes:

- The specifications are tested at 25°C ±5°C, relative humidity 55~75%.
- Other quality and characteristic not specify in this datasheet. Please contact us for detail requirements.



Well Genius Technology (Shanghai) LTD.

Room 904, Block B, Hi-Tech Building, No.900 Yi Shan Rd, Shanghai, P.R.C Tel: (021) 6495 8888 Fax: (021) 5423 5889 Zip Code: 200233