

Band Pass Filter

WGLB-00140

50Ω 110 to 170 MHz

Ver. B
2017.9.29

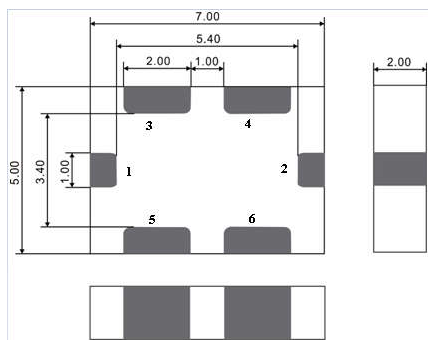
Maximum Rating

Operating Temperature	-40°C~+85°C
Storage Temperature	-40°C~+85°C
RF Input Power	10W max at 25°C

Pin Connections

RF Input	1
RF Output	2
Ground	3,4,5,6

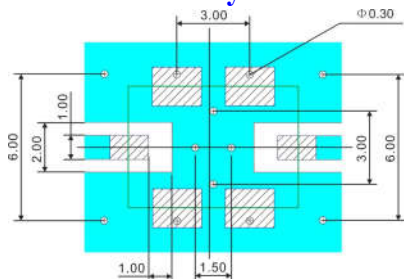
Outline Drawing



Unit: mm

Tolerance: ±0.1mm

Demo Board PCB Layout



1. Unit: mm

Tolerance: ±0.02mm

2. Material: Rogers R04350B

PCB Thickness: H=0.508mm

Copper Thickness: T=35μm

Features

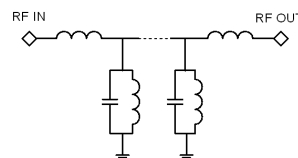
- High Performance
- Small Size
- Wide Band
- Ultra Low I.L.
- Temperature Stable
- LTCC Structure

Application

- Test and Measurement
- Harmonic Rejection
- Transmitters/Receivers



RoHS Compliant



Functional Schematic

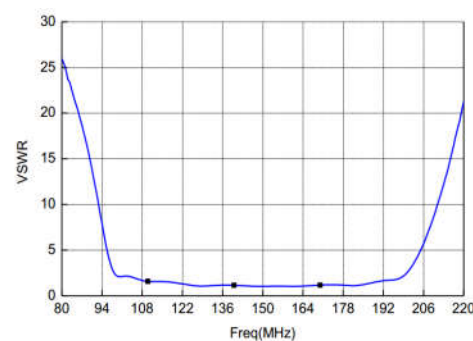
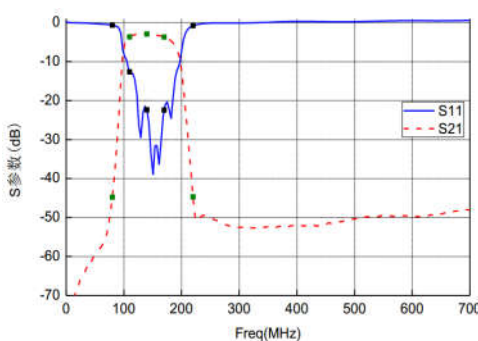
Electrical Specifications⁽¹⁾ at 25°C

Parameter		Frequency (MHz)	MIN	Typ.	MAX	Unit
Pass Band	Insertion Loss	110-170	-	3.67	4.0	dB
	VSWR	110-170	-	1.2	1.5	:1
	Group Delay	110-170	-	-	30	ns
Stop Band	Rejection Loss	DC-80	40	-	-	dB
		220-2000	40	-	-	dB

(1) Test on our Demo Board.

Typical Performance at 25°C

Frequency (MHz)	Insertion Loss (dB)	Return Loss (dB)
0.03	77.41	0.34
35	62.98	0.13
70	54.3	0.47
105	4.51	9.71
140	2.92	22.41
175	4.02	20.36
210	27.55	1.87
280	52.02	0.12
315	52.5	0.09
385	52.39	0.26
420	52.11	0.30
490	50.55	0.21
525	49.81	0.31
595	49.71	0.51
665	48.62	0.50



Notes

- The specifications are tested at 25°C±5°C, relative humidity 55~75%.
- Other quality and characteristic not specify in this datasheet. Please contact us for detail requirements.



Well Genius Technology (Shanghai) LTD.

Room 904, Block B, Hi-Tech Building, No.900 Yi Shan Rd, Shanghai, P.R.C Tel: (021) 6495 8888 Fax: (021) 5423 5889 Zip Code: 200233