

# Band Pass Filter

## WGLB-01000

50Ω

880 to 1120 MHz

Ver. A

2018.8.31

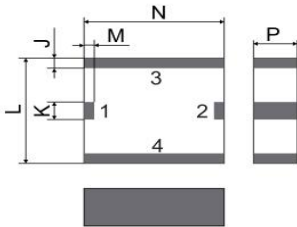
### Maximum Rating

Operating Temperature	-40°C~+85°C
Storage Temperature	-40°C~+85°C
RF Input Power	10W max at 25°C

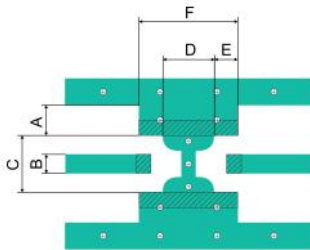
### Pin Connections

RF Input	1
RF Output	2
Ground	3,4

### Outline Drawing



### Demo Board PCB Layout



### Dimensions (±0.10mm)

A	B	C	D
2.50	1.20	3.60	3.40
E	F	J	K
1.60	6.60	0.40	0.70
L	M	N	P
4.20	0.35	4.80	1.50

1. Unit: mm

Tolerance: ±0.1mm

2. Material: Rogers R04350B

PCB Thickness: H=0.508mm

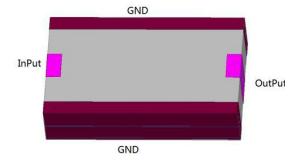
Copper Thickness: T=35μm

### Features

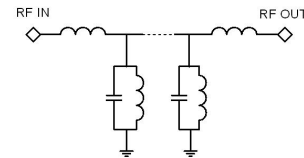
- High Performance
- Small Size
- Wide Band
- Ultra Low I.L.
- Temperature Stable
- LTCC Structure

### Application

- Test and Measurement
- Harmonic Rejection
- Transmitters/Receivers



RoHS Compliant



Functional Schematic

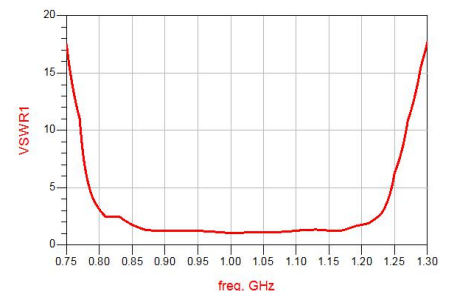
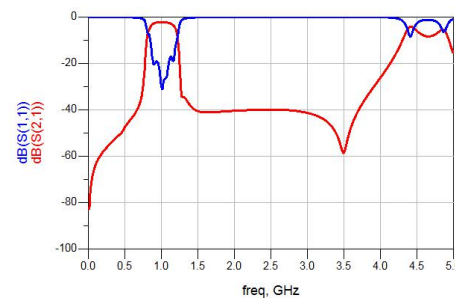
### Electrical Specifications<sup>(1)</sup> at 25°C

Parameter		Frequency (MHz)	MIN	Typ.	MAX	Unit
Pass Band	Insertion Loss	880-1120	-	2.1	3.5	dB
	VSWR	880-1120	-	1.2	1.8	:1
	Group Delay	880-1120	-	-	3.5	ns
Stop Band	Rejection Loss	DC-730	30	-	-	dB
		1300-3500	30	-	-	dB

(1) Test on our Demo Board.

### Typical Performance at 25°C

Frequency (MHz)	Insertion Loss (dB)	Return Loss (dB)
10	82.80	0.01
100	63.43	0.02
500	47.38	0.16
880	3.07	18.87
1000	2.22	30.13
1120	2.87	17.37
1200	5.92	11.27
1300	34.51	0.98
1500	40.64	0.23
2000	40.49	0.07
2500	39.91	0.06
3000	41.41	0.06
3500	58.31	0.07
4000	26.15	0.17
5000	15.40	0.99



### Notes

- The specifications are tested at 25°C±5°C, relative humidity 55~75%.
- Other quality and characteristic not specify in this datasheet. Please contact us for detail requirements.



Well Genius Technology (Shanghai) LTD.

Room 904, Block B, Hi-Tech Building, No.900 Yi Shan Rd, Shanghai, P.R.C Tel: (021) 6495 8888 Fax: (021) 5423 5889 Zip Code: 200233