

Low Pass Filter

WGLL-00575

50Ω

DC to 575 MHz

Ver. B
2021.01.30

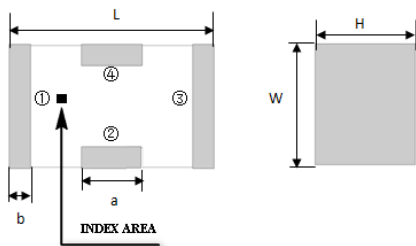
Maximum Rating

Operating Temperature	-55°C~+100°C
Storage Temperature	-55°C~+100°C
RF Input Power	8W max at 25°C

Pin Connections

RF Input	1
RF Output	3
Ground	2,4

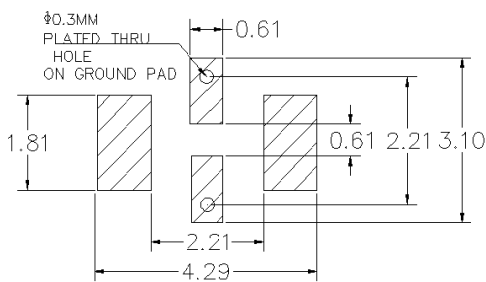
Outline Drawing



Outline Dimension(mm)

W	L	H
1.6±0.2	3.2±0.2	1.0±0.2
a	b	
0.8±0.1	0.5±0.1	

PCB Land Pattern(mm)



SUGGESTED LAYOUT

TOLERANCE TO BE WITHIN $\pm 0.05\text{mm}$

Features

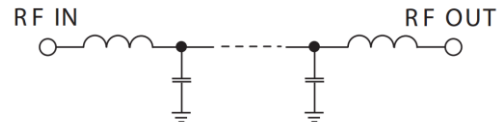
- High Performance
- Small Size
- Wide Band
- Ultra Low I.L.
- Temperature Stable
- LTCC Structure

Application

- Harmonic Rejection
- Transmitters/Receivers
- Lab Use



RoHS Compliant



Functional Schematic

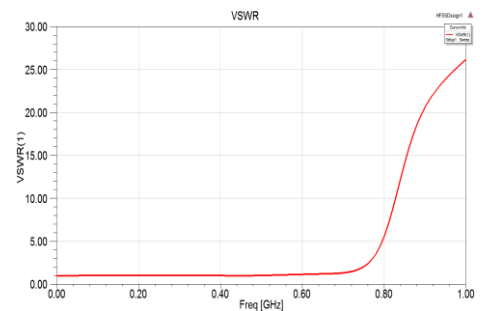
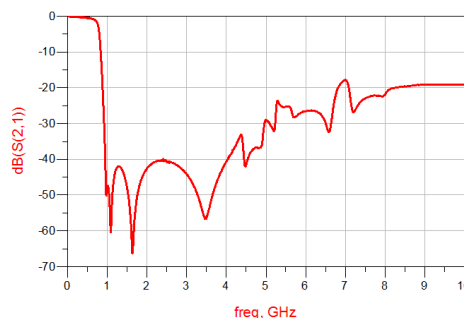
Electrical Specifications⁽¹⁾ at 25°C

Parameter		Frequency (MHz)	MIN	Typ.	MAX	Unit
Pass Band	Insertion Loss	DC-575	-	0.8	1.2	dB
	Freq. Cut-off	770	-	3.0	-	dB
	VSWR	DC-575	-	1.2	1.5	:1
Stop Band	Rejection Loss	900	20	25	-	dB
		1050-3200	30	40	-	dB
		5500	15	25	-	dB

(1) Tested on Demo Board.

Typical Performance at 25°C

Frequency (MHz)	Insertion Loss (dB)	VSWR (:1)
50	0.091	1.02
100	0.13	1.03
575	0.63	1.11
770	3.09	1.24
900	26.13	12.5
955	45.886	17.29
1000	47.49	20.85
1040	49.88	24.55
1130	48.95	31.96
2015	42.34	74.48
3000	44.23	92.27
3500	56.22	100.59
4000	40.57	74.79
4500	41.41	64.87
5500	25.3	27.6



a. The specifications are tested at 25°C±5°C, relative humidity 55~75%.
b. Other quality and characteristic not specify in this datasheet.
Please contact us for detail requirements.



Well Genius Technology (Shanghai) LTD.

Room 1001, Block C, Hi-Tech Building, No.900 Yi Shan Rd, Shanghai, P.R.C, 200233

Tel: (021) 6495 8888

Fax: (021) 5423 5889

www.wellgenius.com