

Low Pass Filter

WGLL-00490

50Ω DC to 490MHz

Ver. A
2020.08.10

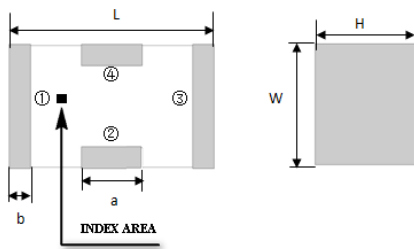
Maximum Rating

Operating Temperature	-55°C~+100°C
Storage Temperature	-55°C~+100°C
RF Input Power	5W max at 25°C

Pin Connections

RF Input	1
RF Output	3
Ground	2,4

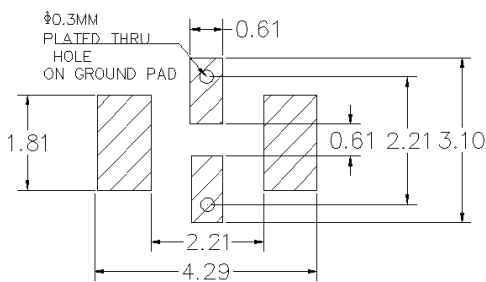
Outline Drawing



Outline Dimension(mm)

W	L	H
1.6±0.2	3.2±0.2	1.0±0.2
a	b	
0.8±0.1	0.5±0.1	

PCB Land Pattern(mm)

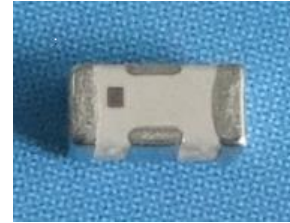


SUGGESTED LAYOUT

TOLERANCE TO BE WITHIN ±0.05mm

Features

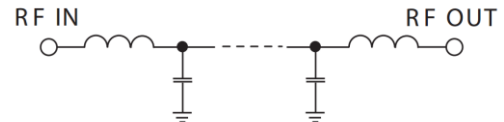
- High Performance
- Small Size
- Wide Band
- Ultra Low I.L.
- Temperature Stable
- LTCC Structure



RoHS Compliant

Application

- Harmonic Rejection
- Transmitters/Receivers
- Lab Use



Functional Schematic

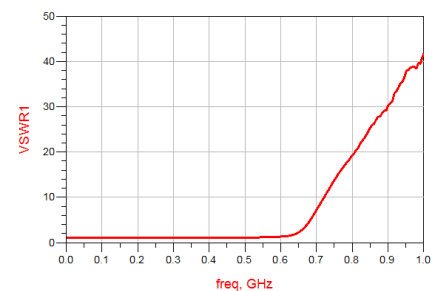
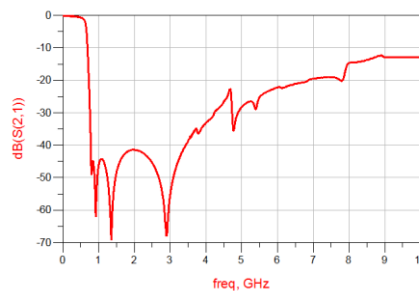
Electrical Specifications⁽¹⁾ at 25°C

Parameter		Frequency (MHz)	MIN	Typ.	MAX	Unit
Pass Band	Insertion Loss	DC-490	-	0.8	1.2	dB
	Freq. Cut-off	640	-	3.0	-	dB
	VSWR	DC-490	-	1.2	1.5	:1
Stop Band	Rejection Loss	760	20	30	-	dB
		800-3400	30	40	-	dB
		4100	20	30	-	dB

(1) Tested on Demo Board.

Typical Performance at 25°C

Frequency (MHz)	Insertion Loss (dB)	VSWR (:1)
50	0.105	1.023
100	0.145	1.025
490	0.643	1.055
640	3.0	1.873
780	40.68	17.22
800	49.12	19.29
920	62.12	33.09
1000	46.26	41.65
1300	56.25	66.79
2000	41.42	91.08
2500	45.6	92.125
3000	55.15	97.75
4000	33.18	77.08
5000	28.19	58.36
6000	22.23	39.7



Notes

- The specifications are tested at 25°C±5°C, relative humidity 55~75%.
- Other quality and characteristic not specify in this datasheet. Please contact us for detail requirements.



Well Genius Technology (Shanghai) LTD.