

Low Pass Filter

WGLL-02850-2012

50Ω DC to 2850 MHz

Ver. A
2021.08.08

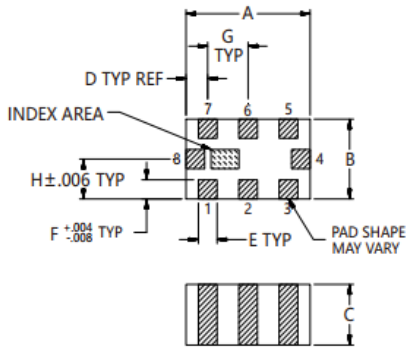
Maximum Rating

Operating Temperature	-55°C~+125°C
Storage Temperature	-55°C~+125°C
RF Input Power	5.5W max at 25°C

Pin Connections

RF Input	8
RF Output	4
Ground	1,2,3,5,6,7

Outline Drawing

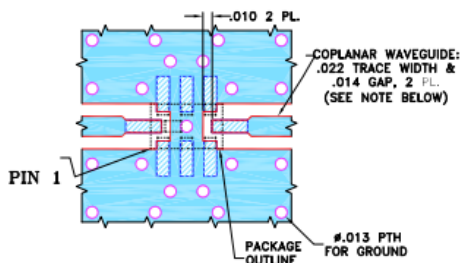


Outline Dimensions (inch)

A	B	C	D	E	F	G	Wt.
.079	.049	.037	.014	.012	.012	.026	grams
2.00	1.25	0.95	0.35	0.30	0.30	0.65	.008

Note: Please refer to case style drawing for details

Demo Board MCL P/N: CG-2012 Suggested PCB Layout



NOTES:

- COPLANAR WAVEGUIDE IS SHOWN FOR ROGERS RO4350B WITH DIELECTRIC THICKNESS .010" ± .001". COPPER: 1/2 OZ. EACH SIDE. FOR OTHER MATERIALS TRACE WIDTH AND GAP MAY NEED TO BE MODIFIED.
- BOTTOM SIDE OF THE PCB IS CONTINUOUS GROUND PLANE.

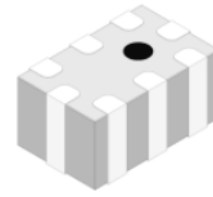
- DENOTES PCB COPPER LAYOUT WITH SMOBC (SOLDER MASK OVER BARE COPPER).
- DENOTES COPPER LAND PATTERN FREE OF SOLDER MASK.

Features

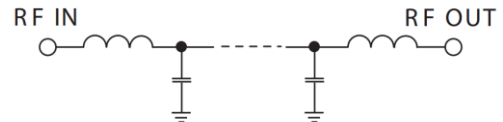
- High Performance
- Small Size
- Wide Band
- Ultra Low I.L.
- Temperature Stable
- LTCC Structure

Application

- Harmonic Rejection
- Transmitters/Receivers
- Lab Use



RoHS Compliant



Functional Schematic

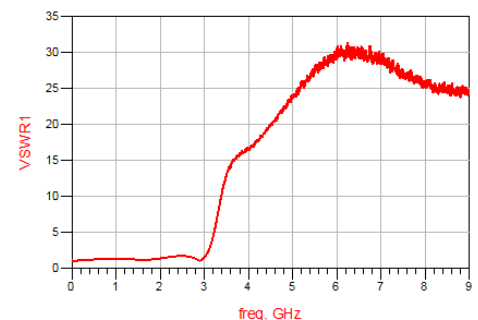
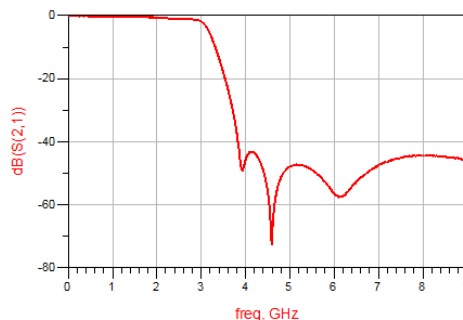
Electrical Specifications⁽¹⁾ at 25°C

Parameter	Frequency (MHz)	MIN	Typ.	MAX	Unit	
Pass Band	Insertion Loss	DC-2850	-	1.2	1.8	dB
	Freq. Cut-off	3090	-	3.0	-	dB
	VSWR	DC-2850	-	1.5	2.0	:1
Stop Band	Rejection Loss	3800-4400	20	-	-	dB
		4400-8000	25	35	-	dB
		8000-12000	20	30	-	dB
		12000-14000	10	20	-	dB

(1) Tested on Demo Board.

Typical Performance at 25°C

Frequency (MHz)	Insertion Loss (dB)	VSWR (:1)
1	0.005	1.03
500	0.207	1.21
1300	0.409	1.24
2100	0.724	1.45
2850	1.181	1.15
3150	4.42	3.408
3775	34.71	15.61
3900	48.22	16.17
4400	49.09	19.25
5600	50.04	28.30
6400	54.05	29.31
6800	49.32	29.08
7800	44.37	26.52
8400	44.57	24.86
9000	46.01	24.70



Notes

- The specifications are tested at 25°C±5°C, relative humidity 55~75%.
- Other quality and characteristic not specify in this datasheet. Please contact us for detail requirements.



Well Genius Technology (Shanghai) LTD.

Room 1001, Block C, Hi-Tech Building, No.900 Yi Shan Rd, Shanghai, P.R.C, 200233

Tel: (021) 6495 8888

Fax: (021) 5423 5889

www.wellgenius.com