

Low Pass Filter

WGLL-02400

50Ω

DC to 2400 MHz

Ver. A

2022.02.22

Maximum Rating

Operating Temperature -55°C~+100°C

Storage Temperature -55°C~+100°C

RF Input Power 9W max at 25°C

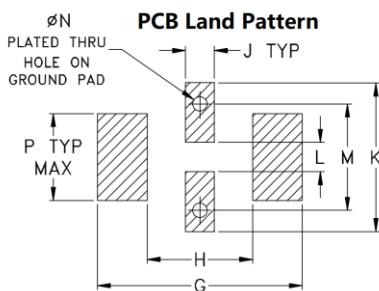
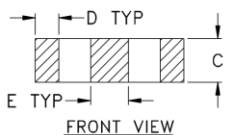
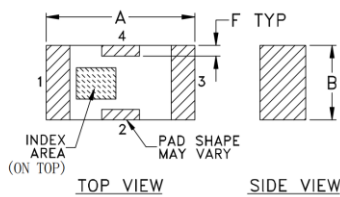
Pin Connections

RF Input 1

RF Output 3

Ground 2,4

Outline Drawing



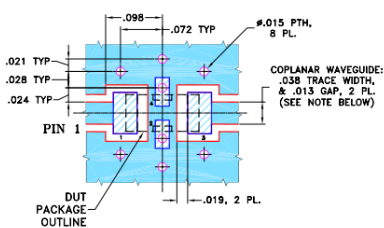
Suggested Layout
Tolerance to be within $\pm .002$

Outline Dimensions (Tolerance) mm

A	B	C	D	E	F	G
3.20	1.60	0.95	0.51	0.81	0.23	4.29
± 0.2	± 0.2	± 0.2	± 0.1	± 0.1	± 0.1	± 0.1

H	J	K	L	M	N	P	wt
2.21	0.61	3.10	0.61	2.21	0.30	1.8	.020

Demo Board MCL P/N: T-39 Suggested PCB Layout (PL-137)



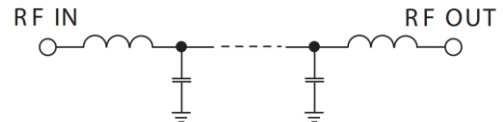
- NOTES:
- COPLANAR WAVEGUIDE PARAMETERS ARE SHOWN FOR ROGERS RO4350B WITH THICKNESS $.020 \pm .0015$ ". COPPER: 1/2 OZ. EACH SIDE. FOR OTHER MATERIALS TRACE WIDTH & GAP MAY NEED TO BE MODIFIED.
 - BOTTOM SIDE OF THE PCB IS CONTINUOUS GROUND PLANE. DENOTES PCB COPPER LAYOUT WITH SMOBC (SOLDER MASK OVER BARE COPPER) DENOTES COPPER LAND PATTERN FREE OF SOLDER MASK

Features

- High Performance
- Small Size
- Wide Band
- Ultra Low I.L.
- Temperature Stable
- LTCC Structure



RoHS Compliant



Application

- Harmonic Rejection
- Transmitters/Receivers
- Lab Use

Functional Schematic

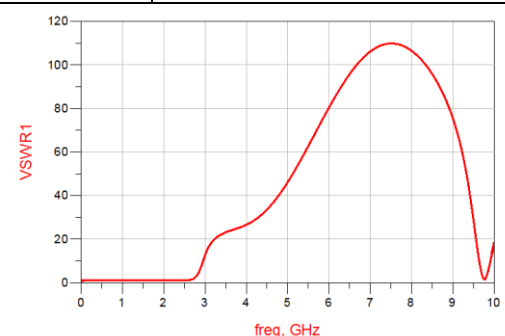
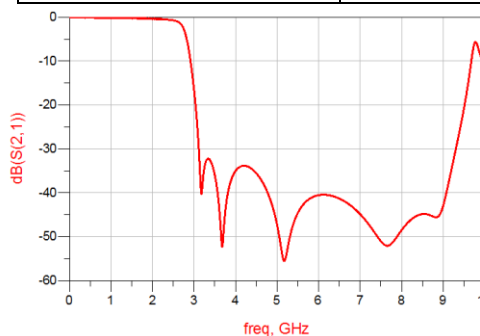
Electrical Specifications⁽¹⁾ at 25°C

Parameter		Frequency (MHz)	MIN	Typ.	MAX	Unit
Pass Band	Insertion Loss	DC-2400	-	1.2	1.5	dB
	Freq. Cut-off	2760	-	3.0	-	dB
	VSWR	DC-2400	-	1.5	2.0	:1
Stop Band	Rejection Loss	3600	20	30	-	dB
		3700-4000	20	30	-	dB
		5000	20	30	-	dB

(1) Tested on Demo Board.

Typical Performance at 25°C

Frequency (MHz)	Insertion Loss (dB)	VSWR (:1)
10	0.073	1.016
310	0.084	1.039
600	0.113	1.072
900	0.152	1.101
1200	0.194	1.126
1500	0.239	1.149
1800	0.304	1.177
2100	0.420	1.214
2400	0.620	1.182
2850	6.307	4.905
3000	16.713	12.68
3300	32.53	21.08
3600	43.00	23.86
4200	33.87	28.77
5000	47.33	46.18



Notes

- The specifications are tested at 25°C \pm 5°C, relative humidity 55~75%.
- Other quality and characteristic not specify in this datasheet. Please contact us for detail requirements.



Well Genius Technology (Shanghai) LTD.

Room 1001, Block C, Hi-Tech Building, No.900 Yi Shan Rd, Shanghai, P.R.C, 200233

Tel: (021) 6495 8888

Fax: (021) 5423 5889

www.wellgenius.com