

Low Pass Filter

WGLL-02750

50Ω

DC to 2750 MHz

Ver. C
2020.1.18

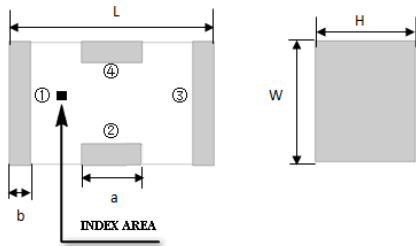
Maximum Rating

Operating Temperature	-55°C~+100°C
Storage Temperature	-55°C~+100°C
RF Input Power	5W max at 25°C

Pin Connections

RF Input	1
RF Output	3
Ground	2,4

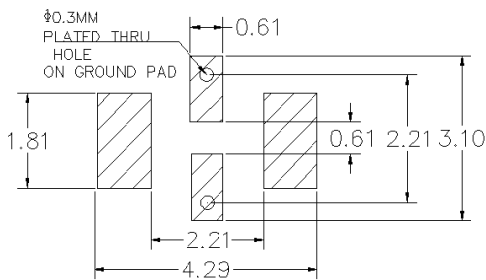
Outline Drawing



Outline Dimension(mm)

W	L	H
1.6±0.2	3.2±0.2	1.0±0.2
a	b	
0.8±0.1	0.5±0.1	

PCB Land Pattern(mm)



SUGGESTED LAYOUT

TOLERANCE TO BE WITHIN ±0.05mm

Features

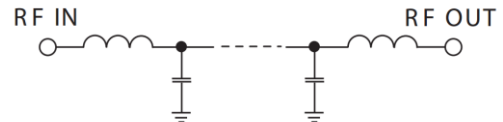
- High Performance
- Small Size
- Wide Band
- Ultra Low I.L.
- Temperature Stable
- LTCC Structure

Application

- Harmonic Rejection
- Transmitters/Receivers
- Lab Use



RoHS Compliant



Functional Schematic

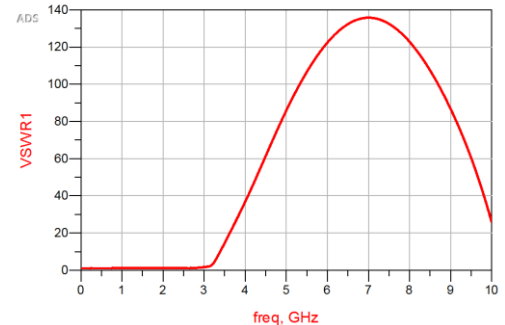
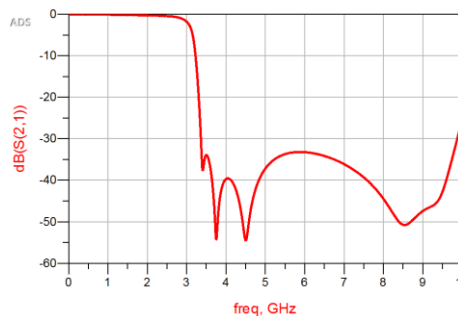
Electrical Specifications⁽¹⁾ at 25°C

Parameter		Frequency (MHz)	MIN	Typ.	MAX	Unit
Pass Band	Insertion Loss	DC-2750	-	1.0	1.2	dB
	Freq. Cut-off	3230	-	3.0	-	dB
	VSWR	DC-2750	-	1.2	1.5	:1
Stop Band	Rejection Loss	4000	20	30	-	dB
		4100-6800	20	30	-	dB
		8400	18	28	-	dB

(1) Tested on Demo Board.

Typical Performance at 25°C

Frequency (MHz)	Insertion Loss (dB)	VSWR (:1)
100	0.07	1.02
500	0.1	1.05
1300	0.24	1.05
2100	0.4	1.06
2750	0.80	1.15
3230	3.0	3.16
3500	21.0	18.15
4000	65.3	25.78
4500	42.0	29.0
5500	38.7	47.4
6000	35.8	63
6800	35.7	89.56
7800	40.2	107.1
8400	44.7	104
9000	48.5	90.61



Notes

- The specifications are tested at 25°C±5°C, relative humidity 55~75%.
- Other quality and characteristic not specify in this datasheet. Please contact us for detail requirements.



Well Genius Technology (Shanghai) LTD.

Room 904, Block B, Hi-Tech Building, No.900 Yi Shan Rd, Shanghai, P.R.C Tel: (021) 6495 8888 Fax: (021) 5423 5889 Zip Code: 200233