

# Low Pass Filter

# WGLL-11000

50Ω DC to 11000 MHz

Ver. A  
2022.02.22

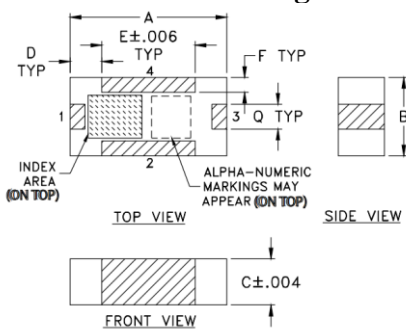
## Maximum Rating

Operating Temperature	-55°C~+100°C
Storage Temperature	-55°C~+100°C
RF Input Power	8W max at 25°C

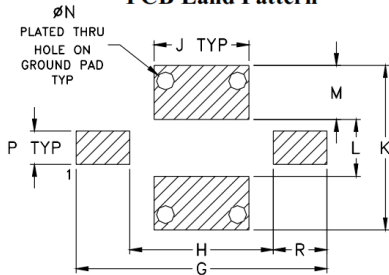
## Pin Connections

RF Input	1
RF Output	3
Ground	2,4

## Outline Drawing



## PCB Land Pattern

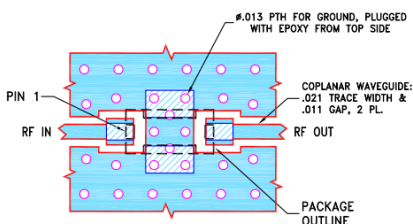


Suggested Layout,  
Tolerance to be within ±002

## Outline Dimensions (inch)

A	B	C	D	E	F	G	H	J
.126	.063	.037	.026	.075	.012	.182	.104	.069
3.20	1.60	0.94	0.66	1.91	0.30	4.62	2.64	1.75
K	L	M	N	P	Q	R	wt	
.119	.041	.039	.013	.024	.020	.039	grams	
3.02	1.04	0.99	0.33	0.61	0.51	0.99	.020	

Demo Board MCL P/N: T-11  
Suggested PCB Layout (PL-137)



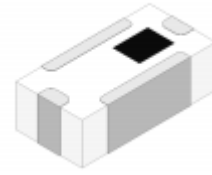
### NOTES:

1. TRACE WIDTH & GAP PARAMETERS ARE SHOWN FOR ROGERS RO4350B WITH DIELECTRIC THICKNESS .010±.001, COPPER: 1/2 OZ. EACH SIDE. FOR OTHER MATERIALS TRACE WIDTH & GAP MAY NEED TO BE MODIFIED.  
2. BOTTOM SIDE OF THE PCB IS CONTINUOUS GROUND PLANE.

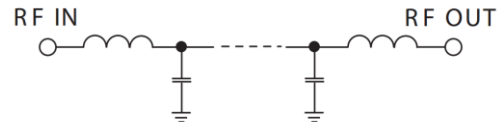
■ DENOTES PCB COPPER LAYOUT WITH SMOBC (SOLDER MASK OVER BARE COPPER).  
■ DENOTES COPPER LAND PATTERN FREE OF SOLDER MASK.

## Features

- High Performance
- Small Size
- Wide Band
- Ultra Low I.L.
- Temperature Stable
- LTCC Structure



RoHS Compliant



Functional Schematic

## Application

- Harmonic Rejection
- Transmitters/Receivers
- Lab Use

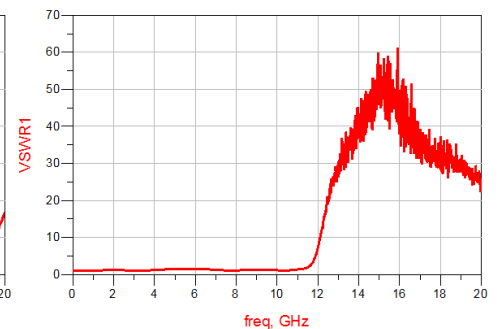
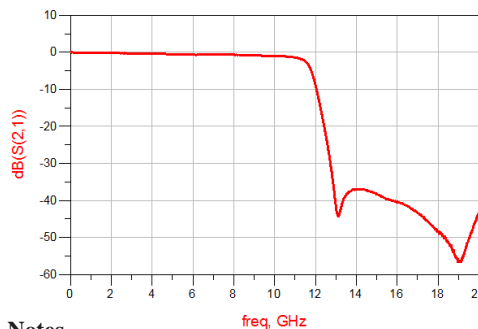
## Electrical Specifications<sup>(1)</sup> at 25°C

Parameter	Frequency (MHz)	MIN	Typ.	MAX	Unit	
Pass Band	Insertion Loss	DC-10800	-	1.3	2.0	dB
	Freq. Cut-off	11610	-	3.0	-	dB
	VSWR	DC-10800	-	1.6	2.0	:1
Stop Band	Rejection Loss	14000	20	30	-	dB
		14500-20000	20	35	-	dB
	VSWR	14500-20000	-	20	-	:1

(1) Tested on Demo Board.

## Typical Performance at 25°C

Frequency (MHz)	Insertion Loss (dB)	VSWR (:1)
1000	0.118	1.094
1210	0.143	1.115
1410	0.161	1.131
2010	0.212	1.156
3200	0.270	1.066
3800	0.320	1.138
4200	0.390	1.250
5000	0.556	1.479
6260	0.659	1.467
8450	0.739	1.187
10050	0.907	1.133
11060	1.510	1.384
13290	41.28	29.32
15410	39.32	50.01
18650	51.99	28.23



## Notes

- The specifications are tested at 25°C±5°C, relative humidity 55~75%.
- Other quality and characteristic not specify in this datasheet. Please contact us for detail requirements.



Well Genius Technology (Shanghai) LTD.

Room 1001, Block C, Hi-Tech Building, No.900 Yi Shan Rd, Shanghai, P.R.C, 200233

Tel: (021) 6495 8888

Fax: (021) 5423 5889

www.wellgenius.com