

High Pass Filter

WGLH-01320

50Ω 1400 to 5000 MHz

Ver. A
2021.06.06

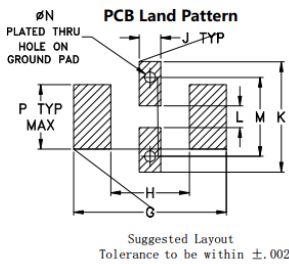
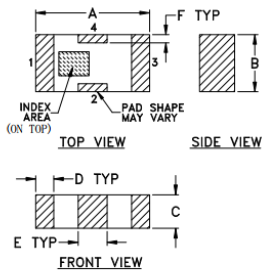
Maximum Rating

Operating Temperature	-55°C~+100°C
Storage Temperature	-55°C~+100°C
RF Input Power	7W max at 25°C

Pin Connections

RF Input	1
RF Output	3
Ground	2,4

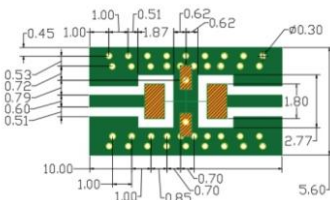
Outline Drawing



Outline Dimensions (Tolerance mm)

A	B	C	D	E	F	G
3.20	1.60	0.95	0.51	0.81	0.23	4.29
±0.2	±0.2	±0.2	±0.1	±0.1	±0.1	
H	J	K	L	M	N	P
2.21	0.61	3.10	0.61	2.21	0.30	1.8
						wt
						.020

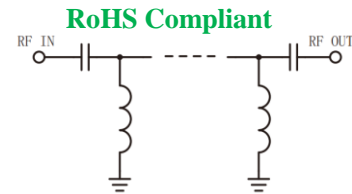
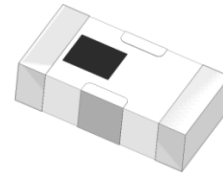
Demo Board MCL P/N: T-39 Suggested PCB Layout (PL-137)



- NOTES:
1. COPLANAR WAVEGUIDE PARAMETERS ARE SHOWN FOR ROGERS RO4350 WITH THICKNESS .508" ± .0015". COPPER: 1/2 OZ. EACH SIDE. FOR OTHER MATERIALS TRACE WIDTH & GAP MAY NEED TO BE MODIFIED.
 2. BOTTOM SIDE OF THE PCB IS CONTINUOUS GROUND PLANE.
 - DENOTES PCB COPPER LAYOUT WITH SMOBC (SOLDER MASK OVER BARE COPPER)
 - DENOTES COPPER LAND PATTERN FREE OF SOLDER MASK

Features

- High Performance
- Small Size
- Wide Band
- Ultra Low I.L.
- Temperature Stable
- LTCC Structure



Application

- Harmonic Rejection
- Transmitters/Receivers
- Base Station of Mobile Communication
- Lab Use

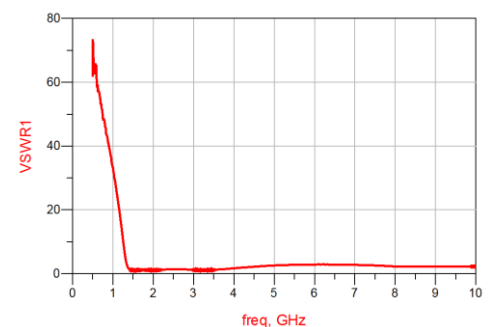
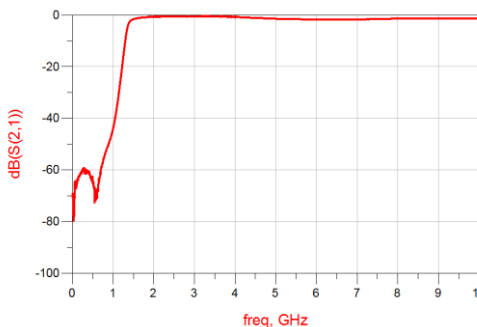
Electrical Specifications⁽¹⁾ at 25°C

Parameter	Frequency (MHz)	MIN	Typ.	MAX	Unit	
Pass Band	Insertion Loss	1400-5000	-	1.2	2.0	dB
	Freq. Cut-off	1390	-	3.0	-	dB
	VSWR	1700-3700	-	1.4	1.5	:1
Stop Band	Rejection Loss	880	40	50	-	dB
		1060	20	38	-	dB

(1) Tested on Demo Board.

Typical Performance at 25°C

Frequency (MHz)	Insertion Loss (dB)	VSWR (:1)
10	69.74	292.7
100	64.40	181.8
880	50.42	41.18
1060	38.91	28.54
1180	25.43	17.64
1260	14.94	9.46
1320	7.61	4.13
1400	2.76	1.43
1700	1.04	1.19
3700	0.60	1.38
3800	0.65	1.47
5000	1.45	2.56
6000	1.73	2.88
7000	1.70	2.76
8000	1.36	2.26



Notes

- The specifications are tested at 25°C±5°C, relative humidity 55~75%.
- Other quality and characteristic not specify in this datasheet. Please contact us for detail requirements.



Well Genius Technology (Shanghai) LTD.