

Band Pass Filter

WGLB-04700-1608

50Ω 4400 to 5000 MHz

Ver. B
2021.08.23

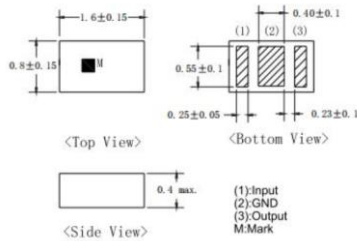
Maximum Rating

Operating Temperature	-40°C~+85°C
Storage Temperature	-55°C~+125°C
RF Input Power	3W max at 25°C

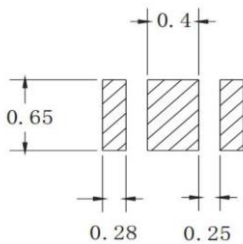
Pin Connections

RF Input	1
RF Output	3
Ground	2

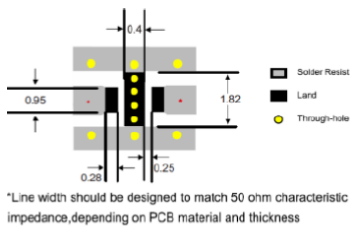
Outline Drawing



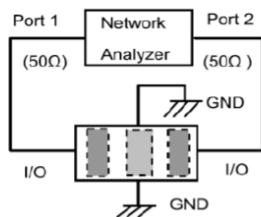
PCB Land Pattern(mm)



Suggested PCB Layout



Measuring Diagram

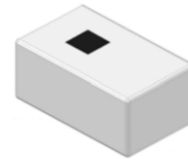


Features

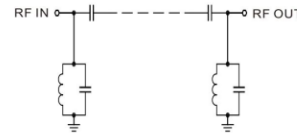
- High Performance
- Small Size
- Wide Band
- Ultra Low I.L.
- Temperature Stable
- LTCC Structure

Application

- Harmonic Rejection
- Transmitters/Receivers
- Lab Use



RoHS Compliant



Functional Schematic

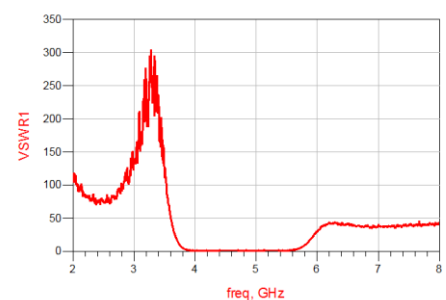
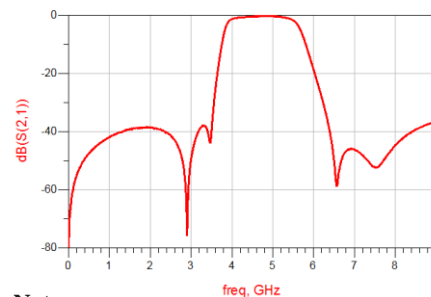
Electrical Specifications⁽¹⁾ at 25°C

Parameter		Frequency (MHz)	MIN	Typ.	MAX	Unit
Pass Band	Center Frequency	-	-	4700	-	MHz
	Insertion Loss	4400-5000	-	1.15	1.5	dB
	VSWR	4400-5000	-	1.7	2.0	:1
Stop Band	Rejection Loss	440-915	35	45	-	dB
		925-2485	30	39	-	dB
		2485-3600	20	33	-	dB
		5850-6100	7	12	-	dB
		6100-6980	15	27	-	dB
		8800-15000	25	29	-	dB

(1) Test on our Demo Board.

Typical Performance at 25°C

Frequency (MHz)	Insertion Loss (dB)	VSWR (:1)
500	47.59	118.9
1000	41.97	149.3
2000	38.58	104.9
3000	49.68	134.6
4000	1.37	1.062
4400	0.624	1.399
4700	0.404	1.411
5000	0.411	1.221
6500	50.22	74.13
7000	46.13	40.95
7500	52.31	39.13
8000	44.7	40.98
8800	37.54	32.73
9000	36.64	28.79
10000	45.16	24.75



Notes:

- The specifications are tested at 25°C±5°C, relative humidity 55~75%.
- Other quality and characteristic not specify in this datasheet. Please contact us for detail requirements.



Well Genius Technology (Shanghai) LTD.