

Band Pass Filter

WGLB-03750-1608

50Ω 3300 to 4200 MHz

Ver. A
2021.01.01

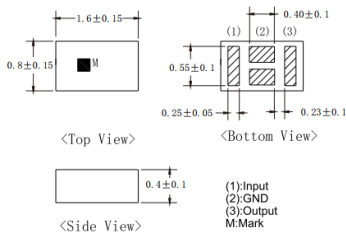
Maximum Rating

Operating Temperature	-40°C~+85°C
Storage Temperature	-40°C~+85°C
RF Input Power	2W max at 25°C

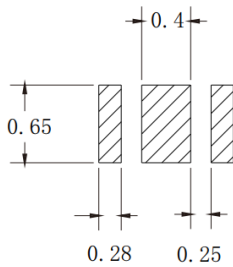
Pin Connections

RF Input	1
RF Output	3
Ground	2

Outline Drawing



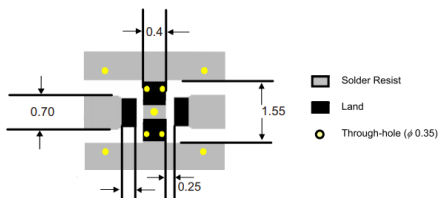
PCB Land Pattern(mm)



SUGGESTED LAYOUT

TOLERANCE TO BE WITHIN ±0.002mm

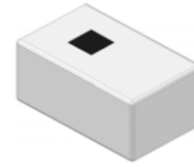
Suggested PCB Layout



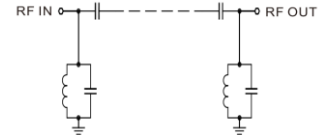
Tolerance to be within ±0.002 Line width should be designed to match 50 characteristic impedance, depending on PCB material and thickness

Features

- High Performance
- Small Size
- Wide Band
- Ultra Low I.L.
- Temperature Stable
- LTCC Structure



RoHS Compliant



Application

- Harmonic Rejection
- Transmitters/Receivers
- Lab Use

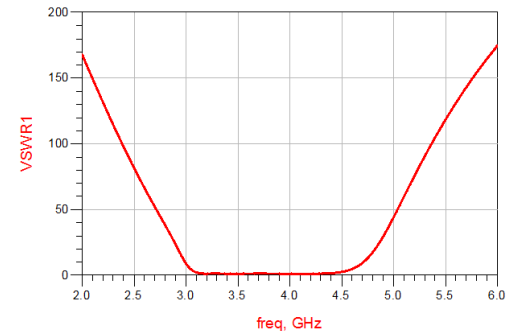
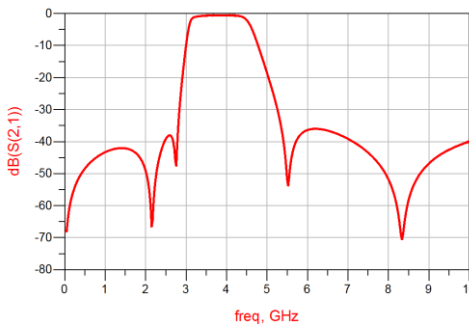
Functional Schematic

Parameter		Frequency (MHz)	MIN	Typ.	MAX	Unit
Pass Band	Center Frequency	-	-	3750	-	MHz
	Insertion Loss	3300-4200	-	2.3	3.0	dB
	VSWR	3300-4200	-	1.5	2.0	:1
Stop Band	Rejection Loss	DC-2170	30	44	-	dB
		2300-2700	30	41	-	dB
		5500-5850	20	22	-	dB

(1) Test on our Demo Board.

Typical Performance at 25°C

Frequency (MHz)	Insertion Loss (dB)	VSWR (:1)
1000	43.3	398.9
2170	64.74	136.9
2500	39.17	5.634
3340	0.84	1.19
3750	0.607	1.226
4200	0.65	1.038
4500	2.12	2.5
5000	18.6	44.17
5500	52	118.43
6000	36.4	174.6
7000	39.17	234.7
8000	51.8	255.97
8500	58.18	264.36
9000	46.86	273.9
10000	40	292.1



Notes:

- The specifications are tested at 25°C±5°C, relative humidity 55~75%.
- Other quality and characteristic not specify in this datasheet. Please contact us for detail requirements.



Well Genius Technology (Shanghai) LTD.

Room 904, Block B, Hi-Tech Building, No.900 Yi Shan Rd, Shanghai, P.R.C Tel: (021) 6495 8888 Fax: (021) 5423 5889 Zip Code: 200233