

# Band Pass Filter

WGLB-03600-2012

50Ω 3400 to 3800 MHz

Ver. A  
2020.8.18

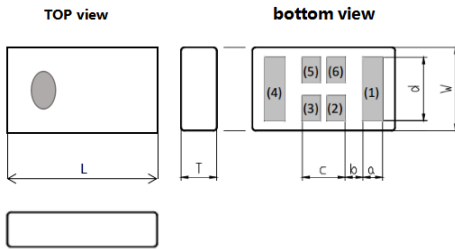
## Maximum Rating

Operating Temperature	-40°C~+85°C
Storage Temperature	-40°C~+85°C
RF Input Power	2W max at 25°C

## Pin Connections

RF Input	4
RF Output	1
Ground	2,3,5,6

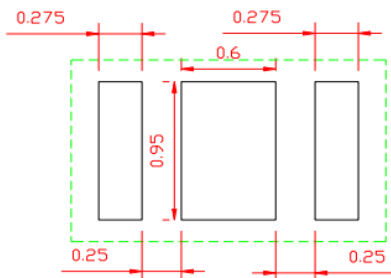
## Outline Drawing



## Outline Dimension(mm)

L	W	T
2.00±0.15	1.2±0.10	0.65±0.10
a	b	c
0.275±0.10	0.25±0.10	0.60±0.10
d		
0.95±0.15		

## PCB Land Pattern(mm)



SUGGESTED LAYOUT

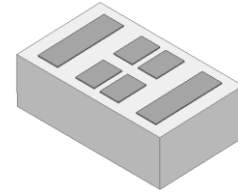
TOLERANCE TO BE WITHIN ±0.05mm

## Features

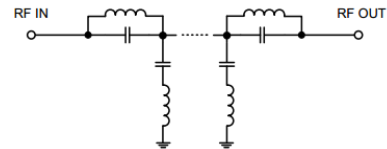
- High Performance
- Small Size
- Wide Band
- Ultra Low I.L.
- Temperature Stable
- LTCC Structure

## Application

- Harmonic Rejection
- Transmitters/Receivers
- Lab Use



RoHS Compliant



Functional Schematic

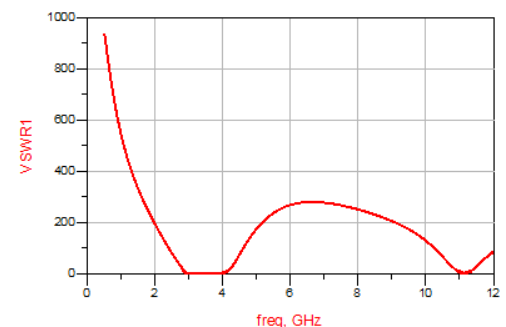
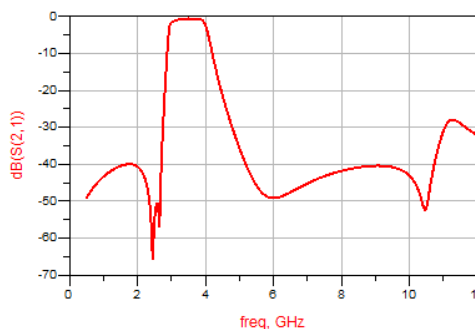
## Electrical Specifications<sup>(1)</sup> at 25°C

Parameter		Frequency (MHz)	MIN	Typ.	MAX	Unit
Pass Band	Center Frequency	-	-	3600	-	MHz
	Insertion Loss	3400-3800	-	0.9	1.5	dB
	VSWR	3400-3800	-	1.5	2.0	:1
Stop Band	Rejection Loss	500-2170	31	40	-	dB
		2300-2700	26	40	-	dB
		4800-4900	25	35	-	dB
		5150-10800	30	40	-	dB

(1) Test on our Demo Board.

## Typical Performance at 25°C

Frequency (MHz)	Insertion Loss (dB)	VSWR (:1)
500	49.2	931
1000	43.37	535.63
2170	42.8	151.04
2300	47.02	121.5
2700	39.79	39.09
3400	1.05	1.145
3600	0.98	1.225
3800	0.95	1.212
4380	17.278	50.564
4800	30.53	141.8
5150	39.3	198.8
6250	48.65	276.6
6800	46.12	279.8
7200	44.35	274.2
10000	43.19	129.1



a. The specifications are tested at 25°C±5°C, relative humidity 55~75%.  
b. Other quality and characteristic not specify in this datasheet.  
Please contact us for detail requirements.



Well Genius Technology (Shanghai) LTD.

Room 904, Block B, Hi-Tech Building, No.900 Yi Shan Rd, Shanghai, P.R.C Tel: (021) 6495 8888 Fax: (021) 5423 5889 Zip Code: 200233