

# Band Pass Filter

WGLB-02593-2012

50Ω 2496 to 2690 MHz

Ver. B  
2020.9.25

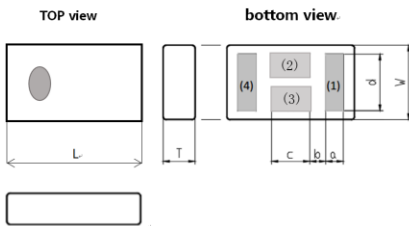
## Maximum Rating

Operating Temperature	-40°C~+85°C
Storage Temperature	-40°C~+85°C
RF Input Power	2W max at 25°C

## Pin Connections

RF Input	4
RF Output	1
Ground	2,3

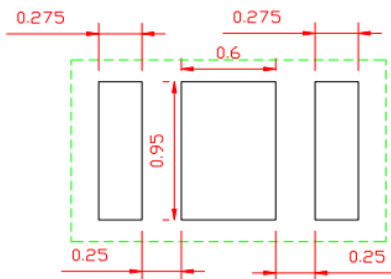
## Outline Drawing



## Outline Dimension(mm)

L	W	T
2.00±0.15	1.20±0.10	0.65±0.10
a	b	c
0.275±0.10	0.25±0.10	0.60±0.10
d		
0.95±0.15		

## PCB Land Pattern(mm)

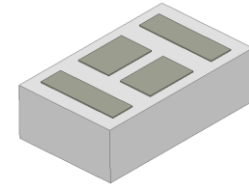


SUGGESTED LAYOUT

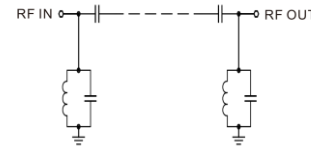
TOLERANCE TO BE WITHIN ±0.05mm

## Features

- High Performance
- Small Size
- Wide Band
- Ultra Low I.L.
- Temperature Stable
- LTCC Structure



## RoHS Compliant



## Functional Schematic

## Application

- Harmonic Rejection
- Transmitters/Receivers
- Lab Use

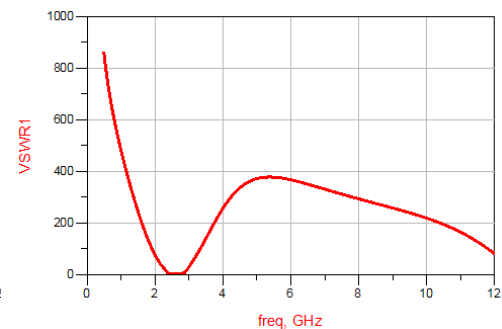
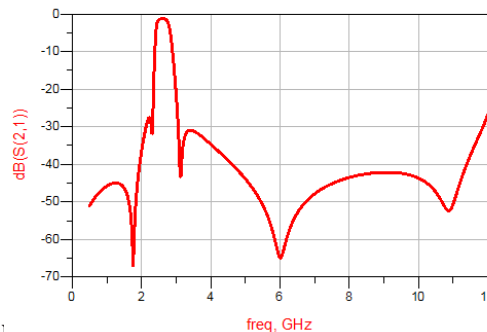
## Electrical Specifications<sup>(1)</sup> at 25°C

Parameter		Frequency (MHz)	MIN	Typ.	MAX	Unit
Pass Band	Center Frequency	-	-	2593	-	MHz
	Insertion Loss	2496-2690	-	2.5	3.5	dB
	VSWR	2496-2690	-	2.5	3.0	:1
Stop Band	Rejection Loss	500-2000	16	30	-	dB
		2125-2313	12	30	-	dB
		2992-3400	10	15	-	dB
		6000-10000	20	25	-	dB

(1) Test on our Demo Board.

## Typical Performance at 25°C

Frequency (MHz)	Insertion Loss (dB)	VSWR (:1)
500	51	858
1000	45.77	481.7
2313	31.84	16.68
2496	1.60	2.0
2600	1.23	2.096
2690	1.414	2.106
2992	20.99	27.27
3800	30.97	212.2
4000	34.7	256.1
5000	43.9	371.1
5100	45.08	374.1
6000	64.8	366.3
8000	43.52	292.56
10000	43.7	217.9
12000	27.1	80.66



a. The specifications are tested at 25°C±5°C, relative humidity 55~75%.  
b. Other quality and characteristic not specify in this datasheet.  
Please contact us for detail requirements.



Well Genius Technology (Shanghai) LTD.

Room 1001, Block C, Hi-Tech Building, No.900 Yi Shan Rd, Shanghai, P.R.C, 200233

Tel: (021) 6495 8888

Fax: (021) 5423 5889

www.wellgenius.com