

# Band Pass Filter

## WGLB-01945

50Ω 1850 to 2040 MHz

Ver. A  
2019.6.26

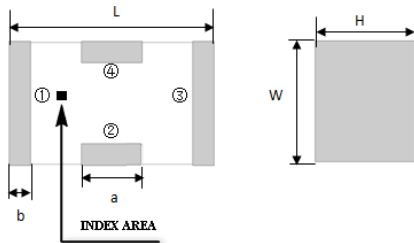
### Maximum Rating

Operating Temperature	-55°C~+100°C
Storage Temperature	-55°C~+100°C
RF Input Power	5W max at 25°C

### Pin Connections

RF Input	1
RF Output	3
Ground	2,4

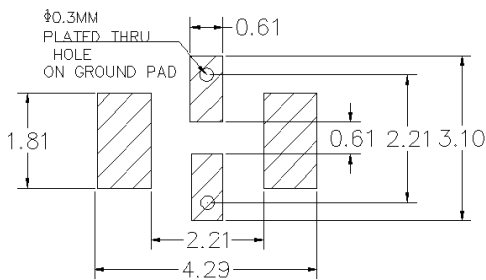
### Outline Drawing



### Outline Dimension(mm)

W	L	H
1.6±0.2	3.2±0.2	1.0±0.2
a	b	
0.8±0.1	0.5±0.1	

### PCB Land Pattern(mm)



SUGGESTED LAYOUT

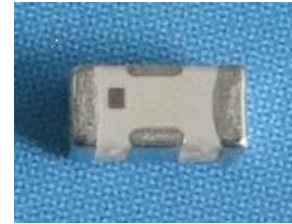
TOLERANCE TO BE WITHIN ±0.05mm

### Features

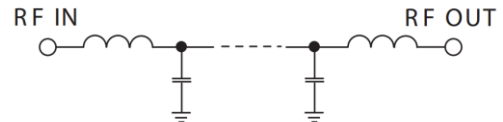
- High Performance
- Small Size
- Wide Band
- Ultra Low I.L.
- Temperature Stable
- LTCC Structure

### Application

- Harmonic Rejection
- Transmitters/Receivers
- Lab Use



RoHS Compliant



Functional Schematic

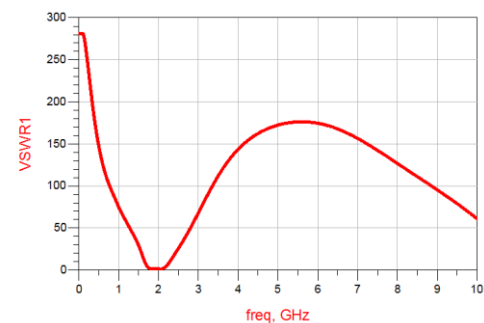
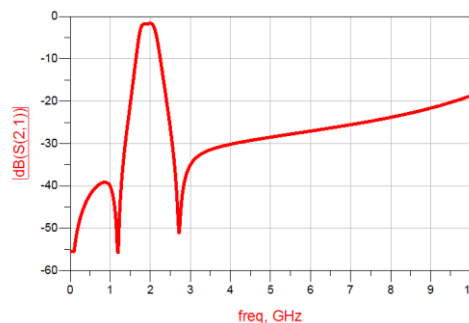
### Electrical Specifications<sup>(1)</sup> at 25°C

Parameter		Frequency (MHz)	MIN	Typ.	MAX	Unit
Pass Band	Center Frequency	-	-	1945	-	MHz
	Insertion Loss	1850-2040	-	2.0	3.0	dB
	VSWR	1850-2040	-	1.5	2.5	:1
Stop Band	Rejection Loss	DC-1500	20	30	-	dB
		3600-5700	20	30	-	dB
		7000	15	25	-	dB

(1) Test on our Demo Board.

### Typical Performance at 25°C

Frequency (MHz)	Insertion Loss (dB)	VSWR (:1)
50	55.50	281.6
300	46.16	212.9
1000	40.08	74.25
1400	28.18	38.9
1500	20.70	28.7
1850	1.77	1.32
1900	1.76	1.56
2040	1.80	1.16
2200	6.95	5.1
2500	26.39	26.0
2800	42.11	50.14
2900	37.30	59.07
4500	29.29	162.5
4800	28.81	169.23
5700	27.50	179.6



### Notes:

- The specifications are tested at 25°C ±5°C, relative humidity 55~75%.
- Other quality and characteristic not specify in this datasheet. Please contact us for detail requirements.



Well Genius Technology (Shanghai) LTD.

Room 904, Block B, Hi-Tech Building, No.900 Yi Shan Rd, Shanghai, P.R.C Tel: (021) 6495 8888 Fax: (021) 5423 5889 Zip Code: 200233