

Band Pass Filter

WGLB-01860

50Ω 1580 to 2200 MHz

Ver. A
2020.10.24

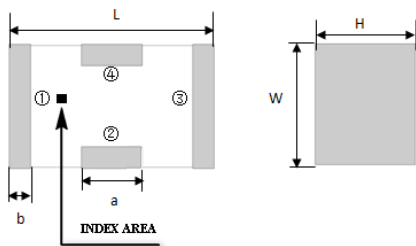
Maximum Rating

Operating Temperature	-55°C~+100°C
Storage Temperature	-55°C~+100°C
RF Input Power	3W max at 25°C

Pin Connections

RF Input	1
RF Output	3
Ground	2,4

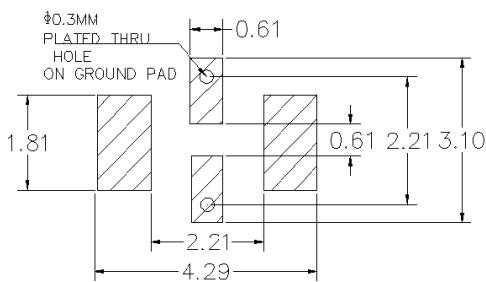
Outline Drawing



Outline Dimension(mm)

W	L	H
1.6±0.2	3.2±0.2	1.0±0.2
a	b	
0.8±0.1	0.5±0.1	

PCB Land Pattern(mm)



SUGGESTED LAYOUT

TOLERANCE TO BE WITHIN ±0.05mm

Features

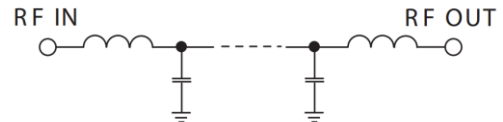
- High Performance
- Small Size
- Wide Band
- Ultra Low I.L.
- Temperature Stable
- LTCC Structure

Application

- Harmonic Rejection
- Transmitters/Receivers
- Lab Use



RoHS Compliant



Functional Schematic

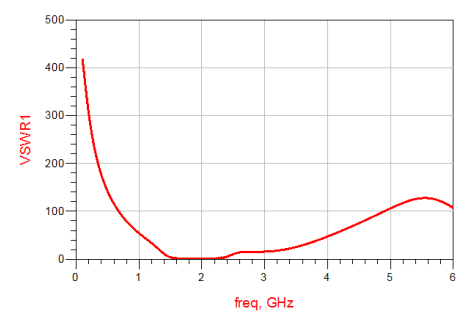
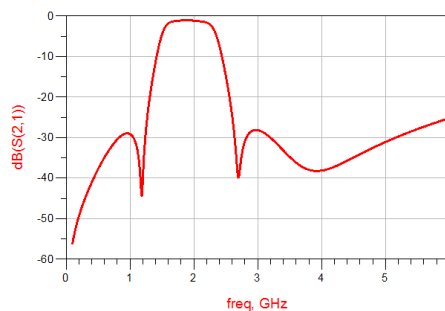
Electrical Specifications⁽¹⁾ at 25°C

Parameter		Frequency (MHz)	MIN	Typ.	MAX	Unit
Pass Band	Center Frequency	-	-	1860	-	MHz
	Insertion Loss	1580-2200	-	2.0	3.5	dB
	VSWR	1580-2200	-	1.5	2.5	:1
Stop Band	Rejection Loss	DC-1200	20	30	-	dB
		2600-4800	15	25	-	dB
		5000	20	30	-	dB

(1) Test on our Demo Board.

Typical Performance at 25°C

Frequency (MHz)	Insertion Loss (dB)	VSWR (:1)
100	56.16	417.6
300	44.86	225.7
500	37.80	141.3
1000	29.13	53.85
1200	40.41	33.24
1400	11.36	10.56
1580	2.10	1.661
2000	1.15	1.286
2200	1.64	1.274
2700	39.87	15.12
3000	28.18	15.57
3500	34.77	25.27
4000	38.16	47.21
4500	34.93	75.10
5700	26.78	125.3



Notes:

- The specifications are tested at 25°C±5°C, relative humidity 55~75%.
- Other quality and characteristic not specify in this datasheet. Please contact us for detail requirements.



Well Genius Technology (Shanghai) LTD.