

Band Pass Filter

WGLB-01810-1005

50Ω

1710 to 1910 MHz

Ver. A

2021.01.01

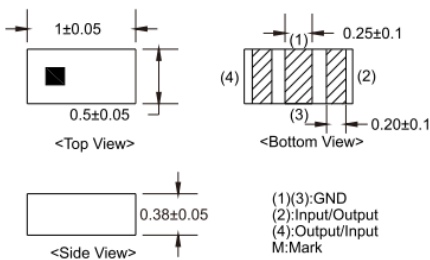
Maximum Rating

Operating Temperature	-40°C~+85°C
Storage Temperature	-55°C~+100°C
RF Input Power	2W max at 25°C

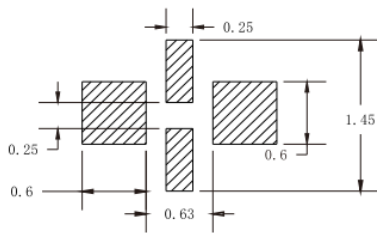
Pin Connections

RF Input	4
RF Output	2
Ground	1,3

Outline Drawing



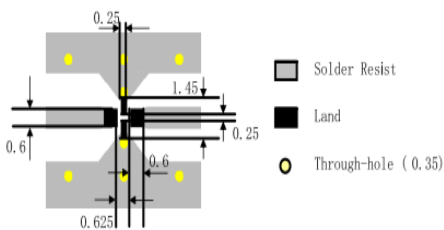
PCB Land Pattern(mm)



SUGGESTED LAYOUT

TOLERANCE TO BE WITHIN ±0.002mm

Suggested PCB Layout



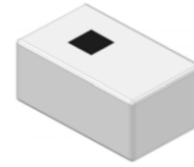
Tolerance to be within ±0.002 Line width should be designed to match 50 characteristic impedance, depending on PCB material and thickness

Features

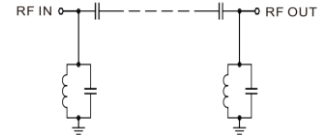
- High Performance
- Small Size
- Wide Band
- Ultra Low I.L.
- Temperature Stable
- LTCC Structure

Application

- Harmonic Rejection
- Transmitters/Receivers
- Lab Use



RoHS Compliant



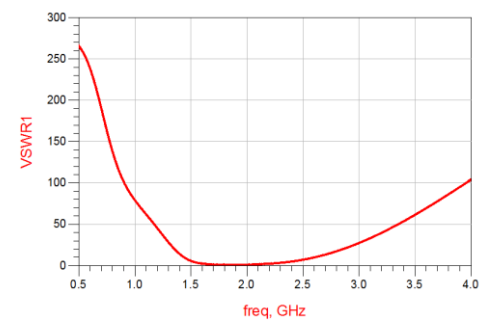
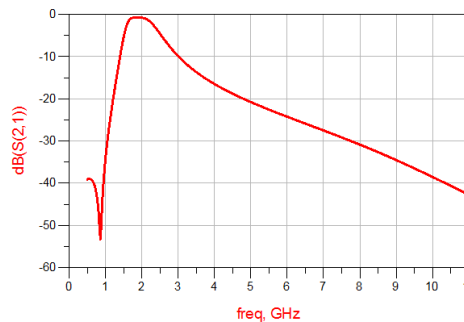
Functional Schematic

Parameter		Frequency (MHz)	MIN	Typ.	MAX	Unit
Pass Band	Center Frequency	-	-	1810	-	MHz
	Insertion Loss	1710-1910	-	1.0	2.0	dB
	VSWR	1710-1910	-	1.5	2.0	:1
Stop Band	Rejection Loss	DC-1000	20	30	-	dB
		2565-2865	5	15	-	dB
		7000	15	25	-	dB

(1) Test on our Demo Board.

Typical Performance at 25°C

Frequency (MHz)	Insertion Loss (dB)	VSWR (:1)
500	39	265.7
1000	33.86	78.91
1500	5.3	5.634
1710	0.93	1.17
1810	0.727	1.09
1910	0.746	1.1
2500	4.6	7.1
3000	10	27.3
3500	13.7	61.4
4000	16.5	103.8
4500	18.8	148.3
5000	20.8	189.5
6000	24.3	250
7000	27.5	277.5
8000	30.86	278.7



Notes:

- The specifications are tested at 25°C±5°C, relative humidity 55~75%.
- Other quality and characteristic not specify in this datasheet. Please contact us for detail requirements.



Well Genius Technology (Shanghai) LTD.

Room 904, Block B, Hi-Tech Building, No.900 Yi Shan Rd, Shanghai, P.R.C Tel: (021) 6495 8888 Fax: (021) 5423 5889 Zip Code: 200233